



MADISON KNITTERS' GUILD KNITTERS' KNEWS

Volume 28 Issue 6

February 2008

Welcome Carol Rhoades on February 11



Carol Rhoades has recently moved to Madison from Austin, Texas. Carol is the Technical Editor of *Spin-Off* and frequently contributes articles to the magazine. She has also published in *PieceWork*, *Interweave Knits*, and *Gavstrik* (a Danish knitting magazine). She learned to knit and crochet while in grade school and took up spinning after college. Her particular interest is primitive Scandinavian wools and the ways that wool are connected to traditional Scandinavian knitwear designs. She

has studied textile history and knitting in Sweden and is a regular participant in Scandinavian knitting conferences. Carol has translated a number of Scandinavian knitting books into English and has taught spinning and knitting around the U.S. as well as in Canada, Norway, Denmark, England and New Zealand.

Carol will present a slide show "Knitting in Finland: Old and New Traditions." She has visited Finland several times for knitting conferences and will discuss the knitting traditions and designer work she has seen there. She will also display items she has knit with Finnish yarns and designs. If you have a love for knits with a Scandinavian flair, you won't want to miss this program!

February Vendors

Argyle Fiber Mill
&
Sutter's Gold 'n Fleece

Upcoming Programs

- * **March 10**
Lily Chin
- * **April 14**
Susanna Hansson
- * **May 12**
Dessert Buffet &
Fashion Show

From Our President—Mary Jo Harris



Hello Knitters!

As I write this letter, the temperature outside is below zero which is a great time to be inside knitting – or at least THINKING about knitting! Here are some of my Guild-related knitting thoughts.

JANUARY POTLUCK

EVALUATION AND DECISIONS FOR FUTURE POTLUCKS

– We learned a few things from our potluck in January, and as a result, we have made some changes to how we will do future potlucks.

Because having only half the members bring food worked for the January potluck, only those members with last names from the last half of the alphabet (M – Z) will be asked to bring a salad or

dessert to the May potluck. Due to popular demand, coffee will be served at both the January and May potlucks.

MKG will provide sandwich meat and buns at both the January and May potlucks. This is being done in an effort to provide more well-rounded food choices. The board felt that many people come to the potlucks right from work which limits the types of dishes they bring. As a result, the January potluck seemed to be light on meats and salads but heavy on desserts. Since we advertise the May potluck as a Salad and Dessert potluck, we saw the same potential for the May potluck. Providing sandwiches is the board's attempt to provide a more balanced array of foods.

KNIT ALONG CHARITY

CHALLENGE – We keep setting new

donation records! At the January meeting 152 items were donated bringing our total for the year to 478. See the details about this month's challenge item later in the newsletter. Good job everyone!

KNITTING SAFARI – Plans are being made for our Knitting Safari scheduled for April 19, 2008. This year we'll be headed to the Chicago area which means it will be a little longer day for more knitting fun! Kate Findley is making the arrangements and will have more information in the March newsletter.

KNIT-IN REMINDERS – We already have almost 100 people registered for the Knit-In on March 8, 2008, so get your registration forms to Carol Huber if you haven't already done so. At this point,

continued on page 2...

Meeting Minutes—January 14, 2008

VENDORS: The Dragonfly Yarn Shop and The Sow's Ear

ATTENDANCE: 125

The Holiday Potluck meeting began at 6:30. Because President Mary Jo Harris was unable to attend the meeting due to a death in her family, Gail Snowden conducted the short business portion of the meeting.

RETREAT: Members were reminded of the Retreat to be held Feb. 1-3 at the Chalet Landhaus in New Glarus. Arrangements can be made directly with the Chalet Landhaus.

KNIT IN: Members were encouraged to register as many of the classes are filling up. One of the new signs that will be used to direct participants and vendors from the road to the Bishop O'Connor Center was on display in the entrance area.

CHARITY CHALLENGE: Gail Snowden displayed many of the items donated tonight which included 11 baby surprise jackets. Total contributed items tonight were 152.

The potluck dinner followed the meeting. Door prizes were awarded including special door prizes for anyone donating an item to the Charity Challenge tonight. Conversation with friends, knitting and shopping rounded out the evening. Thank you Sue Aehl, Hospitality Chair, and Kay Moffat for planning this fun event.

Respectively submitted by Jane Newman

From Our President *continued from page 1...*

the Steeks class and Double Knitting classes are full. The website will have a more up-to-date listing of full classes also.

In an attempt to give you more shopping, knitting, and discussion time, Door Prize winners will not be drawn during lunch this year. Instead, we'll have drawings throughout the day with the winner's names being posted in the Vendor Area. Be sure to check the board throughout the day to see if you're one of the lucky ones!

Another smaller change this year will be that we'll kick off the Knit-In with Welcoming Remarks at 8:45 AM in the Auditorium. Everyone attending the Knit-In is encouraged to attend this welcome session as last minute changes and details will be explained along with giving you a chance to ask last minute questions.

Remember too that we have a block of rooms (including a Hospitality Room) reserved at the Radisson Hotel on Grand Canyon Drive on Friday, March 7, 2008, for those of you interested in coming into Madison the night before the Knit-In. Make your reservations directly with the hotel.

STATE FAIR, ANYONE? – Each year, the State Fair encourages people to enter their knitted items for judging. This year's State Fair categories are being finalized and we will have details in a future newsletter. If you've ever participated in the State Fair competition, we'd like a first hand account of your experience. At the February meeting we will have a sign-up form for those that have participated in the State Fair competition.


BOARD NOMINATIONS – Remember to let a Board member know if you're interested in running for one of the open Board seats this May.

*Mary Jo Harris
President*

Fabulous Yarns Await...

*At the Midwest's First Café
and Yarn Shop*

- *Berroco
- *Cascade
- *Claudia Handpaints
- *Dale of Norway
- *Elsabeth Lavold
- *Fleece Artist
- *Hand Maiden
- *Mountain Colors
- *Nashua
- *Rowan
- *Shibui Knits
- *Universal Yarns
- *Huge Sock Department
- And so many more...
- Plus: Books * Patterns
- *Interweave Press Publications
- *Vogue Knitting
- *Accessories
- * Needles & Other Notions



The Sow's Ear

Hours:
Monday & Friday 6:30am-6pm
Tuesday- Thursday 6:30am-8:30pm
Saturday & Sunday 7am-5pm
*Late Night Knitting: 1st & 3rd Friday of
Every Month- Open until 11pm!

125 S. Main St. Verona, WI 53593 608-848-2755 www.knitandsp.com



Treasurer's Report 1/01/08

The Treasurer's report for February.

Checking account: 11, 610.52

Savings account: 3,051.28

Total: \$14,551.80

-submitted by Kathy Trudell



The Dragonfly Yarn Shop

Kerri A. Shank, Owner

1327 N. Wright Rd. Ste. 5A
Janesville, WI 53546
(608) 757-9228

www.dragonflyyarnshop.com

Store Hours:
Mon-Fri 10 to 5
Sat 10 to 4
Sun 12 to 4
Closed Tues

Fine Wool, Luxury
Fibers, Addi Turbo,
Crystal Palace
Classes

Annual Potluck on January 14th The Potluck Spread!



The Sow's Ear Vending Table

Jayne Coster is knitting a purse.



Members taking in the door prize winners.

Photo credit to Elizabeth Prose

Susan's Fiber Shop



N 250 Hwy. A, Columbus, WI 53925
 Phone: (920) 623-4237 Fax: (920) 623-0120
 Orders Only 888-603-4237

Weaving
Spinning
Knitting
Yarns
Fibers
Tools
Books
Lessons

STUDIO S

FIBRE ARTS

S.J. Woods
 W8903 County Rd. A
 (Corner of 89 and A)
 Delavan, WI 53115-2451
 (608) 883-2123
 sjfiber@jvl.net.com

M, T, 1-5; Th, F, S, 10-3;
 Closed Wed. and Sun.



The Knitting Room
 74 S. Main Street, Suite 101
 Fond du Lac, WI 54935
 920.906.4800
 theknittingroom@charterinternet.net

Monday Closed
 Tuesday 10-9
 Wed & Thurs 10-5
 Friday 10-3
 Saturday 9-2

Kristin Johnson theknittingroomwi.com Beth Mannebach

Lakeside Fibers

More than just a yarn store!

Store Hours:
 Monday: 10-8
 Tuesday: 10-6
 Wednesday: 10-8
 Thursday: 10-6
 Friday: 10-5
 Saturday: 10-5
 Sunday: 11-3

**Don't Forget - Inside LF:
 The Washington Hotel
 Coffee Room!**

402 W. Lakeside St., Madison, WI

Stash Panic: An Article in Three Parts Part II:

Fret not. The feeling of having too much yarn passed. But the panic of “stash panic” did not so easily lift, though. It was about at this time that I spied a washcloth dangling from the counter at the Sow. Attached were those dangerous words “Free Pattern with yarn purchase.” Despite my vow of “no new yarn,” I needed that free pattern, “Grandma’s Favorite Washcloth,” more than I needed to breathe at that moment. And despite having plenty of unknitted cotton already at home, since I needed the pattern, I would also buy some yarn—two skeins, actually, since I couldn’t decide which to get.

With my new skeins of cotton (which are wound but still not knitted, in case you’re wondering which if you’re the kind of knitter I am, i.e. nosy, you are) and elbow deep in stash bins, I collected left over and unknitted skeins of cotton and started in on the Granny’s Washcloth. My neighbor got a couple for feeding the cat; a new colleague got a “welcome to our school” gift; a good friend got two for her birthday; new babies got some for being born; thanks for hosting Thanksgiving again, sisters-in-law—have some washcloths; new step mom—here’s a washcloth; thanks for babysitting—how about a washcloth? Couple a nifty washcloths with a bottle of designer dish soap (Lakeside has some—go figure!), and you’ve got a nice, usable gift. Like, “Here. Enjoy washin’ those dishes!”

In addition to many of Granny’s Favorites, I also just invented a few washcloth patterns. I have rules about the ones I invented: I start with the notion of keep it easy. I cast on between 30 and 40 stitches, depending on the yarn and my mood. For “stash panic” knitting, easy is very important. I only vary patterns that don’t require much thought or time, i.e. use garter stitch, seed stitch, broken ribs, square repeats. I avoid cables, stars, circles—anything that might require writing or charting or thinking. When “stash panic” hits, it is also important to finish some things.

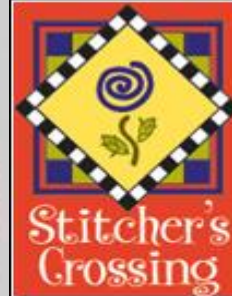
Mittens and scarves may be knitted when you feel like the panic is lifting, but if it increases the panic, don’t do them either. They may simply take too long.

The washcloth thing has been quite fun. It has helped me stay knitting, use some stash, develop a bit of a creative side I had heretofore neglected, and give some gifts. People have actually said things like, “The ones you knit me are the only ones I use” and “If I do laundry, I can’t do dishes because your washcloths are the only ones I have.” So simple has its rewards.

The panic has somewhat passed. I have even started a sweater with some on-hand yarn. But tune in next time for “Vows to help avoid ‘Stash Panic’.” I promise, it’s nothing too scary.

-Gretchen McClain

(to be continued in the next newsletter...)



Great Selection of Yarn and
Needles; Classes for
Beginners to advanced;
Quilting & Cross Stitch Supplies

6122 Mineral Point Road
Madison, WI 53705
(608) 232-1500

Info@stitcherscrossing.com

Store Hours:

M-F 9:30-6:00 Sat 9:30-5:00
Thu until 8:30 Sun 12:00-4:00

Knitter's Treat
Monticello, WI 53570

Ruth Knight Sybers 608-938-4607
Guest Designer Workshops
Many Complete Pattern Lines
Vivian Hoxbro Kits

Appointments and Inquiries at knittertreat@wekz.net

WEAVING • SPINNING • DYEING • KNITTING
QUILTING • SURFACE DESIGN • BASKETRY
HANDMADE PAPER • WOODCARVING

Sievers

SCHOOL OF FIBER ARTS
Birch Court • Washington Island, WI 54246
(920) 847-2264
www.sieversschool.com

RETAIL SALES OF YARNS • BOOKS
FIBER ARTS • FINE CRAFTS

**BEAD
BIN**

BEADS
&
BEADING
SUPPLIES

414 Westgate Mall/Madison, WI 53711
(608) 274-0104
10 - 9 Mon. - Fri. 10 - 5 Sat. 12 - 5 Sun.



Knitting Tips

To keep from twisting the yarn when joining on circular needles, knit back one or two rows after casting on, then join. Sew the small seam at the bottom with the leftover tail.

Since the last stitch in a bind-off can be loose, knit (or purl) the stitch in the row below, and don't use the last stitch on the needle.

When making socks and mittens, reduce the needle size on your last row before sewing up the final stitches for a neater appearance.

You can join two ends of wool yarn by unraveling both ends slightly, wetting both ends in your mouth, and rolling the two ends together to join.

Old dressers are useful for storing larger quantities of yarn—they keep things neat and out of sight!

Wash your swatch so you know what the results will be before you wash your completed garment.

On projects with many stitches, place markers at evenly spaced intervals to make it easier to identify missed stitches without having to count the entire row.

To use up little bits of leftover yarn of different sizes, you can keep an afghan on the go all the time. Cast on 150 sts and knit every row. You might, for example knit one row with your leftover yarn when you finish a project, varying the size of the yarn. For sport-weight and fingering yarn, you may want to use 2 strands together. Because you are knitting only one row, the tension doesn't really matter.

When knitting mittens in the round, knit the thumb increases on a fourth needle. It makes keeping track much easier.

When you need markers and don't have any just get a drinking straw and snip pieces off of it to use as a marker. Cheap and easy to find.

When knitting ribbing, in the second row "knit into back of row" gives a nice neat edge.

If you are new to knitting, every once in a while count your stitches. Make sure if you cast on 15 for example, make sure you still have 15 stitches.



From Our Library...

MISSING BOOK

Dogs in Knits by Judith Swartz went missing at the December meeting. Should you discover it among your things, please return it to the library at the February meeting. Thank you!



Doreen L. Marquart,
Owner

W 9034 County A
(Richmond)
Delavan, WI 53117
(608) 883-9922

www.needlesnpinsyarnshoppe.com

Store Hours

Monday 9-8; Wednesday, Friday & Saturday, 9-5;
Sunday, 1-5; Tuesday & Thursday, Closed



Yarn and Needlework

LLC 227 EAST MAIN
SUN PRAIRIE, WI 53590
(608) 837-8909

M-F 10-5
Sat 10-4

Sue Alstad



1541 Bellevue St.
Green Bay, WI 54311
(920) 884-5258
Fax (920) 884-5259
www.montereyyarn.org

obsessive knitters reward: every completed card entitles bearer to \$20.00 in free merchandise (classes & sale items excluded)

Sandy's Palette LLC

Sandy Jones
305 Maiden Street
Mineral Point, WI 53565
(608) 987-1346
sandy@sandyspalette.com
www.sandyspalette.com



Hand Dyed Yarns & Roving for Knitters & Spinners



Travel Opportunity--Knitting Tour to Scotland

Joyce James, a knitting enthusiast from Canada who happens to be a travel agent/tour director, is leading her 12th "Scottish Skeins & Skerries Tour" to Scotland in July 2008. The itinerary includes Edinburgh, Shetland, Orkney, and the Hebrides. It features private visits with local craftspeople in their homes and studios--knitters, spinners, weavers, jewelers, a basket maker and more. There will also be workshops with members of the Shetland Guild of Spinners, Weavers and Dyers. Although not included in the name, this guild includes some truly remarkable Shetland knitters! Visit www.joycejamestours.com for more details. For a personal recommendation, contact Jane Newman or Karen Scammell who were fortunate enough to accompany Joyce on her 11th tour of Scotland.



IRIS FINE YARNS

132 E. Wisconsin Avenue
Appleton, WI 54911
(920) 954-9001

info@irisfineyarns.com
www.irisfineyarns.com



2614 Monroe St.
Madison, WI 53711
(608) 238-0121

Store Hours: Monday 12-5; Tuesday thru Saturday 10-5 & Thursday until 8 pm



Michele Polster, Owner
11 S. Main Street
Mayville, WI 53050
(920) 387-9960

Store Hours:
Tues, Wed, Fri 10-5 pm
Thurs Noon to 8 pm
Sat 10-3 pm

www.looseendsyarnshop.com
michele@looseendsyarnshop.com

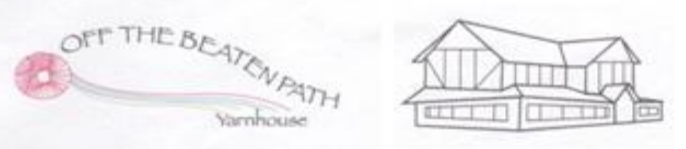
Gone Knitting, LLC
122 W. Court St.
Richland Center, WI 53581
608/649-KNIT (5648)

Yarn Supplies ~ Lessons ~ Mary Oosterhous



Shirley Grade, Owner
940 N. Elm Grove Rd.
Elm Grove, WI 53122
Phone: (262) 786-5660
Fax: (262) 786-5620
theyarnhouse@tds.net

Hours:
Mon, Tues, Thurs, Fri: 10-4
Wed: 10-6 Sat: 10-3



215 Femrite Drive
Monona, WI 53716
Phone: (608) 221-0219
www.knitmeone.com



2007-2008 MKG-Charity Knitting Challenge - Chemo Hats

The members of the MKG have proven themselves up to the challenge each month! You rock, charity knitters!! If you haven't yet participated in the charity knit along, this would be a good month to join the dozens of charity knitters.

Ask any cancer survivor: the treatment for cancer is physically and emotionally debilitating, often leading to despair and depression. The loss of one's hair can be one of the most emotionally draining aspects of the treatment. For February, the MKG knit along challenge is to make a "chemo hat" that is, an attractive hat for a cancer patient to wear during hair-loss.

Why wear a hat during this time? In addition to boosting the feeling of pride in one's physical image, the hat will protect the sensitive scalp and keep the wearer warm.

What kind of hat should you make? Here are some factors to keep in mind: 1. Attractiveness: the wearer wants to look good at a point when her (or his) self-confidence may be at an all time low. 2. Warmth: the wearer may feel chilled due to

the treatment. 3. Softness: the wearer's scalp will be sensitive due to the chemotherapy. 4. Ease of care: the wearer may need to wash the cap frequently; please use machine washable yarn.

What type of pattern should you use? Find a pattern that is close fitting, but not tight. Decorative stitching can be attractive. Find a yarn that is soft to your cheek or neck. Several websites provide links to many patterns. Try www.headhuggers.org, or www.chemocaps.com. Search www.knitty.com or www.magknits.com for hats. A number of them are recommended as chemo hats.

Don't forget, each month is "knitters' choice." If you don't want to make a chemo hat, make your favorite item. Don't forget to use yarn that is easily washable in a machine. Add a removable care label if you can.

-submitted by Gail Snowden

Lace Beanie [Lion Brand® Cotton-Ease (new)]

GAUGE:

17 sts + 24 rows=4 in. [10cm] in Stockinette st worked in the round (knit all rnds). BE SURE TO CHECK YOUR GAUGE. When you match the gauge in a pattern, your project will be the size specified in the pattern and the materials specified in the pattern will be sufficient. If it takes you less stitches and rows to make a 4 in. [10 cm] square, try using a smaller size hook or needles; if more stitches and rows, try a larger size hook or needles.

STITCH EXPLANATION:

K2, p2 Ribbing (worked in the round)

Rnd 1: *K2, p2; rep from * around.

Rnd 2: K the knit sts and p the purl sts.

Rep Rnd 2 for k2, p2 Ribbing

BEANIE

Beginning at crown, cast 6 sts onto 1 double pointed needle.

K into front and then back of each st (increase made) – 12 sts. Divide sts onto 3 needles. Join, being careful not to twist sts.

Place marker for beginning of rnd.

Rnd 1: Knit.

Rnd 2: *K1, k into front and then back of next st; rep from * around - 18 sts.

Rnd 3: Knit.

Rnd 4: *K2, k into front and then back of next st; rep from * around - 24 sts.

Rnd 5: Knit.

Rnd 6: *K3, k into front and then back of next st; rep from * around - 30 sts.

Continue in this manner increasing on every other rnd, having 1 more st between increases, until you have a total of 90 sts.

Next Rnd: K, decrease 2 sts evenly spaced around – 88 sts.

Begin Grunge Lace Pattern

Rnds 1 and 3: *K2, p2; rep from * around.

Rnd 2: *Yo, k2tog, p2; rep from * around.

Rnd 4: *k2tog, yo, p2; rep from * around.

Rep last 4 rnds 3 more times, then work 6 rnds of k2, p2 Ribbing.

Bind off.

FINISHING

Weave in ends.





Charity Knitting Challenge Update

Can you believe it? December's record of 116 donated items was shattered by January's donations—94 hats (from preemie to adult), 7 pairs of mittens (from infant to adult), 5 pairs or socks or booties, 11 scarves and 35 children's sweaters (including 11 Baby Surprise Sweaters)!!! January's total was 152 items. The Madison Knitters' Guild charity knitters are truly generous and awesome! Many children in the Madison will be warmer and healthier due to your efforts.

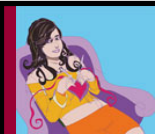
The total, from September to January, is 478 donated items! We will shatter our goal of 500 items. What do you say? Did we underestimate the generosity of the MKG knitters?

Check out the photos at the Charity Knitting Challenge website: <http://mkgckc.blogspot.com>. Or, go to the MKG homepage at www.madisonknittersguild.org and click on the Charity Knitting Challenge link on the top center of the homepage.

The challenge has even inspired a non-Guild member. A new knitter has set herself a goal of making 100 chemo hats. She gives her hats to Muriel at 'Tis the Season in Middleton, who brings them to the MKG meetings. Thank you to Muriel who has coordinated the donations and to the anonymous community knitter.

Reminder: please make donated items out of yarn that will survive a washing machine. Many recipients will launder items with their regular wash. Therefore, acrylic, washable wool, cotton, etc. will be most appreciated. Removable tags with care instructions would also be most appreciated. Sorry to those of you who follow the Elizabeth Zimmerman philosophy that wool for children's wear is most appropriate and is easy to wash! People today tend to throw everything in the machine.

-Gail Snowden



Love is the enchanted dawn of every heart.

- Lamartine



la bella vita fibre gallery

local & fair trade fibres & accessories for the aspiring or avid fibre artisan

154 high street
mineral point. wi 53565
608.987.2105

www.labellavitamp.com labellavitamp@yahoo.com



**Custom Processing
Artisanal Yarns**

Our Brand

www.argylefibermill.com

200 E. Milwaukee St.
Argyle, WI 53504
(608) 543-3933



Wonderfully Soft Yarns From Our Mill

Featuring our own special designs in patterns, kits and yarns

3776 Forshaug Road, Mt. Horeb, WI 53572
(608) 437-3762

www.blackberry-ridge.com

We are a working mill and our shop is open by appointment only, please call ahead.

The Black Sheep



10 E. Main St. Evansville 608-751-2372

Tues. Wed. & Sat. 10:00 a.m.- 4:00 p.m.

Thur. & Fri. 10:00 a.m.- 7:00 p.m.

**Check out our new website for
valuable coupons for the MKG
Knit-In on March 8th.**

www.theblacksheep yarnshop.com

Remember to show your MKG member card and receive a 10% discount on all regularly-priced yarns you purchase.

Getting to Know Our Members — Kathy Trudell



Kathy pictured here at Carmel-by-the-Sea in California.

My two favorite summer activities are bicycling and knitting the sweaters and woolen garments that I wear in the winter. My two favorite winter activities are cross-country skiing and wearing the woolen garments that I knit the summer before.

I've been recently reflecting on what it is about knitting that interests me so. I am so utterly consumed by

it that, at times, I think my behavior extreme. I knit my first piece when I was 6 years old. It was a small, turquoise rectangle, about 3"X3" in size. My mom taught me the basics but she is a leftie and I am not and so everything seemed a bit backward to me. I knit my second piece, a sweater, when I was about 14. The knitting bug hit hard about 20 years ago and I've been consumed ever since. I take my knitting with me everywhere I go. When I'm not knitting, I'm spinning. When I'm not knitting or spinning, I'm shopping for yarn or for fleece. Do you think this is extreme?

For me, knitting is a meditative process. It slows me down. It gives me time and space to think, to dream, to turn a length of wool string into a shawl, a scarf or a sweater. I love seeing how the elegant weave of the stitches can be changed into an endless array of patterns, garment types. I love how knitting and spinning has brought me into the company of so many talented people. I love having knit-togethers and meeting my knitting friends for a quick knitting fix in a coffee shop or a restaurant. It grounds me and it makes me whole.

Knitting, and spinning my own yarn helps me connect the dots of the natural cycles in life— of taking something produced by an animal, washing it, picking it, blending it, spinning it, plying it, sometimes dyeing it and

finally knitting it. It helps me appreciate those things in life that are really important to me—understanding where something comes from and how I can take a perfect piece of raw material and make it into a functional something or other for me or for someone I love to wear.

At the moment, I'm spinning a fleece that I bought from a woman in my spinning group. The sheep was named Madeleine and she was dark brown, nearly black with flecks of silver. I washed the entire fleece lock by lock. As I spin the yarn, I'm hand-picking the locks one by one. So far I have about 500 yards of a beautiful 2-ply dk-weight yarn. I'm thinking a shawl with beads...



Knit, Relax, Be Inspired....
www.riverboutique.com

River Boutique
350 Cottonwood
Hartland, Wisconsin 53029

Fabulous Specialty Yarns, Women's Apparel and Art

**May every stitch you knit bring you
a little closer to that calm, clear
space in the center of your soul.**

-Earth Heart Designs

'Tis The Season
A Christmas Store with a Yarn Corner
 7507 Hubbard Avenue
 Middleton, WI 53562
 (608) 836-3749

Store Hours:
 Monday-Friday 10-5
 Saturday 10-2

 **Classifieds**

From the **YARN HOUSE**, Elm Grove: "Shop Madison this month," says the Yarn House, "but if you do venture out, we'll give you 20% off on needles."

KNITTER'S TREAT: Lily Chin is an experience you may not want to miss! Her experience in the textile industry gives her a unique approach to knitting. Her enthusiasm is inspiring. In mid-January a limited number of these workshops in Monticello were still available. Sunday, March 9 - Shaping Up with Short Rows - 3 hour; Monday, March 10 - Borderline Personalities or On the Edge - 3 hour; Tuesday, March 11 - Reversible Two-Color Knitting - 6 hour; Wednesday, March 12 - Alternative Closures - 3 hour Contact: Ruth Sybers at knitterstreat@wekz.net or 608-938-4607.

2007-2008 Board of Directors & Committee Chairs

President	Mary Jo Harris
Vice President	Connie Burmeister
Treasurer	Kathy Trudell
Secretary	Jane Newman
Historian	Elizabeth Prose
Knit Out Chair	Judy Pruski
Publicity	Gail Snowden
Director at Large	Janette Hermanson
Director at Large	Kay Moffat
Hospitality Chair	Susan Aehl
Librarian	Barb Armstrong
Community Projects Chair	Pat Berhardt
Newsletter Editor	Jayne Coster
Membership Chair	Carol Huber
Knit-Aid Chair	Robbie Preston
Knit-In Chair & Vendor Liaison	Karen Scammell
Advertising Chair	Marcia Stern
Website Chair	Ann Varda



Knitters' Guild Retreat

REMINDER: The second annual Madison Knitters' Guild Retreat will be Feb. 1-3 at the Chalet Landhaus in New Glarus. **The official hours of the event extend from check-in time (3:00) on Friday to check-out time (11:00) on Sunday.**

Members are welcome to stay for the weekend or come for the day on Saturday. The event is free for members. Non-members are welcome for a fee of \$5.00. Bring your projects. We'll have lots of time to knit, talk and enjoy a "yarn tasting." Light refreshments will be available on Saturday. Participants must make their own arrangements with the Chalet Landhaus if they are planning to stay overnight. Call 608-527-5234 and ask for the Madison Knitters' Guild rate. Call or email Jane Newman if you have questions: 608-221-2551 or tomandjane3@charter.net



Attention Vogue Knitters!

ERRATA ALERT – the new Vogue Knitting site is up, and here's the link to the known corrections for all previous issues:

<http://www.vogueknitting.com/vkm/?q=node/99>

This could be helpful for all Vogue Knitting enthusiasts. We understand they cover the past 25 years at this website.

WOODLAND STUDIOS
 Open 7 Days in Historic Stoughton
 195 E. Main Street
 (608) 877-8007
www.woodland-studios.com

Join us for our
"Fireside Knitting Circle"
 Fine Specialty Yarns & Classes

2008 MADISON KNITTERS' GUILD KNIT IN REGISTRATION
 March 8, 2008
Registration limited to MKG members only until February 1, 2008



Name: _____

Address: _____

City/State/Zip: _____

Phone # : _____ Email: _____

MKG Member? yes no

- FULL DAY \$45 member \$55 non-member
 HALF DAY \$30 member \$40 non-member
 KNIT, SHOP & EAT \$15
 SHOP ONLY \$3

Full Day--Choose one class and Lily Chin session **OR** choose two classes. Choose lunch option.
 Half Day--Choose one class **OR** Lily Chin session. Choose lunch option.
 Knit, Shop and Eat: Choose lunch option.
 Shop Only.

Lily Chin--Design Inspirations (Same presentation morning and afternoon.)

Classes: Please indicate first and second choice. Place 1 in box for first choice; 2 for second.
 Classes fill on first come basis. Limit 16 per class.

9-11 am		11am-1 pm	1-3 pm	
<input type="checkbox"/> Beginning Lace	Amy Detjen	Market And Lunch	<input type="checkbox"/> Beaded Knitting	Mo Brown
<input type="checkbox"/> Knit to Fit	Kathy Digman		<input type="checkbox"/> Short Rows	Amy Detjen
<input type="checkbox"/> Steeks FULL	Carol Rhoades		<input type="checkbox"/> Finishing	Marie Duquette
<input type="checkbox"/> Toe up Toes	Ann Varda		<input type="checkbox"/> Double Knitting	FULL Beth Prose

Lunch Options: Choose one.

- Grilled Vegetables on Croissant, Pasta Salad, Lemon Bar
 Cobb Salad, Baguette, Lemon Bar
 Turkey Club Wrap, Potato Salad, Lemon Bar

Details on the classes for the Knit In can be found in your January newsletter or on the web at our website:
www.madisonknittersguild.org

Enclose check payable to Madison Knitters' Guild.

Enclose sase if you wish confirmation/ homework via USPS. All others check that email address is legible. Confirmations will be sent via email unless requested otherwise.

Please indicate if you would like Map to O'Connor Center Map and List of Hotels

Mail to: Carol Huber 3013 Nottingham Way Madison WI 53713



MKG Calendar

February 1-3	Knitters' Retreat		Chalet Landhaus, New Glarus
February 11	MKG Meeting	7:00 p.m.	Monona Community Center; Speaker: Carol Rhoades; Vendors: Sutter's Gold 'n Fleece & Argyle Fiber Mill
March 8	Knit In 2007	9:00 a.m.	Speaker: Lily Chin
March 10	MKG Meeting	7:00 p.m.	Monona Community Center; Speaker: Lily Chin; Vendors: Bead Bin & Woodland Studios
April 14	MKG Meeting	7:00 p.m.	Monona Community Center; Speaker: Susanna Hansson; Vendors: Needles 'n Pins & The Yarn House
April 19	Knitting Safari		Mark your calendar! Details to follow...
May 12	MKG Meeting	7:00 p.m.	Monona Community Center; Annual Appetizer & Dessert Buffet & Fashion Show



Other Fiber Events

March 9-12	Lily Chin in Monticello	Knitters Treat; Phone: 608-938-4607 or email knitterstreat@wekz.net; Openings available in each workshop
April 13-15	Susanna Hansson in Monticello	Knitters Treat; Phone: 608-938-4607 or email knitterstreat@wekz.net; One opening in Bohus workshop, two in short row workshop

Madison Knitters Guild

397 Starling Lane

Madison WI 53704