



# Madison Knitters' Guild Knitters' Knews

Volume 28 Issue 5

January 2008

## January 14 is Our Holiday Potluck



“Potluck” is derived from the Native American custom of *potlatch*— “food given away to guests.” Years ago, as well as now, having a potluck is one of the best and easiest ways to get a crowd together for good times, great food, and in our case, beautiful knitting! Please plan to join us in January for MKG’s Annual Holiday Potluck. This year we ask members with last names beginning with A-L to bring appetizers and desserts. Sampling is the

name of the game. Along with convenience, tasting what others think of as their special dish is much of the potluck charm. If you would like to share your recipe, please bring along copies and place them next to your dish. There will be no guest speaker for this month’s meeting. We’ll enjoy our time with friends, old and new, and meet new members. A cash bar will be available. There will be numerous door prizes that all in attendance will have a chance to win. There will also be feasting for our eyes—our monthly show-n-tell list of members continues to grow. Mark your calendars and plan to attend!

## January Vendors

**Dragonfly Yarn Shop  
&  
The Sow’s Ear**

## Upcoming Programs

- \* **February 11**  
Carol Rhoades
- \* **March 10**  
Lily Chin
- \* **April 14**  
Susanna Hansson

## From Our President—Mary Jo Harris



Happy New Year, Knitters! May this year be everything you wish it to be and filled with lots of knitting!

### JANUARY MEETING REMINDERS

Remember that we will start eating at 6:30 p.m. Members whose last names start with letters A through L are asked to bring a dish to pass for the potluck. In addition to the usual door prizes given out at this meeting, we will have “special” prizes given to only those people that donate a knitted item for the Knit Along Charity Challenge.

### KNIT ALONG CHARITY CHALLENGE

As announced at our last meeting, we had 116 items donated at the last

meeting. This brings our total for the year to 326. Keep up the good work!

### RETREAT REMINDER

There is still time to make your hotel reservation for the MKG Retreat at the Chalet Landhaus in New Glarus, February 1-3, 2008. Remember to ask for the MKG room discount. Staying at the hotel isn’t required to attend the retreat, but it is a nice little something you can do for yourself in addition to the retreat. We’re still working on doing something fun for those arriving on Friday evening.

### SURVEY RESULTS

Thank you for letting us know why you attend MKG meetings. The ranked results are as follows: Speakers, Vendors, See Friends, Get New Ideas,

Show and Tell, Inspiration!

### KNITTING SAFARI

Don’t forget that this year’s Knitting Safari is scheduled for April 19, 2008. Kate Findley has been researching locations and will have the exciting details in an upcoming newsletter.

### BOARD MEMBER ANYONE?

While it still seems a long way off, the May 12 Board Elections will soon be upon us. Three board members will be ending their terms, so their spots will be up for grabs. Please consider running for one of these positions. Details regarding the duties and expectations will be included in an upcoming newsletter. Let a Board Member know if you’re interested.

## Meeting Minutes—December 10, 2007

Attendance: 180

Vendor: Knitter's Treat

The meeting was called to order by President Mary Jo Harris. New members and guests were introduced. Mary Jo asked members to put the elastic in the name tag casing to make it easier to return the tag to the boxes and retrieve it again at the next meeting. She also requested that people pick up their areas after the meeting and deposit trash in the appropriate containers.

**KNITTER'S CHALLENGE:** Gail Snowden displayed some of the donated baby and children's hats. Donated item prior to our December meeting totaled 210, with an additional 116 items were donated last month. January's item is baby sweaters.

**HOLIDAY PARTY:** Sue Aehl announced that the Holiday Party, which is the January meeting, would start at 6:30 p.m. The bartender starts at 6:00 p.m. Members with names beginning A-L should bring food for this party. The rest of the alphabet will bring food to the May meeting. This is in response to comments that there is too much food at the party that goes to waste.

**LIBRARY:** Mary Jo announced that there were two pieces of music in the library, and they will be there until May.

**MEMBERSHIP:** See Carol Huber if you need a roster. She has some at the meeting but can send one electronically. Also see Carol or Jayne Coster if there are difficulties with getting a newsletter.

There was a survey in the lobby regarding why members come to meetings so that the Board can tell what to continue or what to weed out from meetings.

There was an announcement that Woodland Galleries in Stoughton is having a Brown Bad Stash Event on Dec. 19. They also have open knitting every Wednesday night.

**CANDACE EISNER STRICK:** The speaker for this evening's meeting was Candace Eisner Strick. Her talk was entitled "It's All in a Day's Work" in which she shared the ten things she's learned as a knitwear designer. These words to live by are as follows:

- \* exercise daily
- \* eat chocolate every day

- \* always use stitch markers even when you are too lazy to get up and get them
- \* never pass up a skein of yarn because you don't have a clue what you'll do with it
- \* the best plans go awry so don't leave deadlines until the last minute
- \* always bring underwear, a tee shirt, deodorant, toothbrush and something warm in your carry on
- \* you can't please all the people all of the time
- \* be kind to animals always
- \* learn to say "no"
- \* creativity is more perspiration than inspiration

Candace also displayed some of the finished products from her kits which come in several color ways.

A short shopping and library browsing break was followed by SHOW AND TELL. Those with Show and Tell items were:

Carol Stoeckman	Beverly Reynolds
Katie Otto	Sarah Levin-Lederer
Edna Babcock	Linda Cunning
Cindy Hoesly	Jo Turner
Nancy McCulley	Elisa Budde
Rebekah Jacobs	

Door prizes were donated by Knitter's Treat and Candace Eisner Strick.

*Respectively submitted by Jane Newman*

**BEAD**      BEADS  
&  
BEADING  
**BIN**      SUPPLIES

414 Westgate Mall/Madison, WI 53711  
(608) 274-0104  
10 - 9 Mon. - Fri.    10 - 5 Sat.    12 - 5 Sun.



**"It is easy to say how we love new friends, and what we think of them, but words can never trace out all the fibers that knit us to the old."**

**-George Eliot**



**Knitter's Treat**  
Monticello, WI 53570

**Ruth Knight Sybers** 608-938-4607  
Guest Designer Workshops  
Many Complete Pattern Lines  
Vivian Hoxbro Kits

Appointments and Inquiries at [knittertreat@wekz.net](mailto:knittertreat@wekz.net)

**Gone Knitting, LLC**  
122 W. Court St.  
Richland Center, WI 53581  
608/649-KNIT (5648)

Yarn ~ Supplies ~ Lessons ~ Mary Oosterhous



WEAVING • SPINNING • DYEING • KNITTING  
QUILTING • SURFACE DESIGN • BASKETRY  
HANDMADE PAPER • WOODCARVING

**Sievers**  
SCHOOL OF FIBER ARTS  
Birch Court • Washington Island, WI 54246  
(920) 847-2264  
[www.sieversschool.com](http://www.sieversschool.com)

RETAIL SALES OF YARNS • BOOKS  
FIBER ARTS • FINE CRAFTS



**Great Selection of Yarn and Needles; Classes for Beginners to advanced; Quilting & Cross Stitch Supplies**

6122 Mineral Point Road  
Madison, WI 53705  
(608) 232-1500  
[Info@sticherscrossing.com](mailto:Info@sticherscrossing.com)

Store Hours:  
M-F 9:30-6:00 Sat 9:30-5:00  
Thu until 8:30 Sun 12:00-4:00



**Knit, Relax, Be Inspired....**  
[www.riverboutique.com](http://www.riverboutique.com)

River Boutique  
350 Cottonwood  
Hartland, Wisconsin 53029  
Fabulous Specialty Yarns, Women's Apparel and Art

**The Knitting Room**  
74 S. Main Street, Suite 101  
Fond du Lac, WI 54935  
920.906.4800  
[theknittingroom@charterinternet.net](mailto:theknittingroom@charterinternet.net)

Monday Closed  
Tuesday 10-9  
Wed & Thurs 10-5  
Friday 10-3  
Saturday 9-2

Kristin Johnson [theknittingroomwi.com](http://theknittingroomwi.com) Beth Mannebach



**Needles 'n Pins** Doreen L. Marquart, Owner  
**Yarn Shoppe**

W 9034 County A (Richmond)  
Delavan, WI 53117  
(608) 883-9922

[www.needlesnpinsyarnshoppe.com](http://www.needlesnpinsyarnshoppe.com)

Store Hours  
Monday 9-8; Wednesday, Friday & Saturday, 9-5;  
Sunday, 1-5; Tuesday & Thursday, Closed



## Stash Panic: An Article in Three Parts

### Part I: The Disease

Let me preface this by saying that when my family and I moved a little over a year ago, I had to go from having a yarn room to having a yarn area. Not too bad of a situation—I still had room to display my yarn. Still, my yarn room had one thing that my yarn area does not: a closet. (Even now as I'm writing this, I'm hearing the collective gasp.) Having no closet meant nowhere to hide yarn; it meant nowhere to literally stash extra projects; it meant nowhere to keep the UFO's. (Sadly, much of my yarn remains in plastic bins which are stored under the stairs.)

When moving, I think it is best to focus and deny. Pack it and move it. Don't pay attention or think about it. Ideally, I think this method is best. Taking your time, handling your yarn, mulling over the project you have in mind for various bags of yarn, reminiscing, oohing and aahing over forgotten bags takes time. And who takes three years to move? So that's what I did. I packed it up and moved it all with very little thought—only enough to help me feel organized, but I didn't pay enough attention to what I was actually packing.

When I got settled in at the new house (the pool table in the basement is another story—but a good one! Let's just say, it was smack dab in the middle of my yarn area. People suggested we enjoy it as long as we had it. To them, I would just repeat: it's my yarn area. I'll knit and drive when I have to; I'll knit and read when I've got an easy project going. But I do not mix knitting and billiards.) Much of my yarn had to stay in the plastic bins in which the skeins had been moved.

The panic started innocently enough: I had finished something and was eager to root around to find a new project. And it hit. Digging through the bins, I panicked. There was so much that I had forgotten about: denim that I had hoarded when the Sow put it on sale; a bag of Cheryl Oberle wool and alpaca still untouched from several Stitches back; a lovely green wool that I had bought in order to help someone's third-world struggling economy (I will save the world through buying yarn!); umpteen projects I had bought for Edi, my daughter, when she was an infant and now is not and would need more yarn. I literally panicked and couldn't decide what to do next.

Even my fall-back position of knitting on a project already on the needles offered no solace. Nothing clicked—as it were. I didn't really love the shawl that I had started; Edi was never going to wear the socks that I had to keep extending for her growing toddler feet; the cotton backpack was too tedious; the sleeves for the silk cardigan were too hard.

Help. I was having to confront the thought that I perhaps had too much yarn.

-Gretchen McClain

(to be continued in the next newsletter...)

*Prairie Junction*  
Yarn and Needlework  
LLC 227 EAST MAIN  
SUN PRAIRIE, WI 53590  
(608) 837-8909

M-F 10-5  
Sat 10-4

*Sue Alstad*



215 Femrite Drive  
Monona, WI 53716  
Phone: (608) 221-0219  
[www.knitmeone.com](http://www.knitmeone.com)



It's such a human condition, whether you're a great track star or a great knitting person or you paint watercolors - someone knows who you are.

-Tony Curtis

LOOSE ENDS  
YARN SHOP



**Michele Polster, Owner**  
11 S. Main Street  
Mayville, WI 53050  
(920) 387-9960

Store Hours:  
Tues, Wed, Fri 10-5 pm  
Thurs Noon to 8 pm  
Sat 10-3 pm

[www.looseendsyarnshop.com](http://www.looseendsyarnshop.com)  
[michele@looseendsyarnshop.com](mailto:michele@looseendsyarnshop.com)



## Knitting Tips

### Starting a New Ball

Always begin a new ball at the beginning of a row. This way you can finish off the ends making them disappear in the seam.

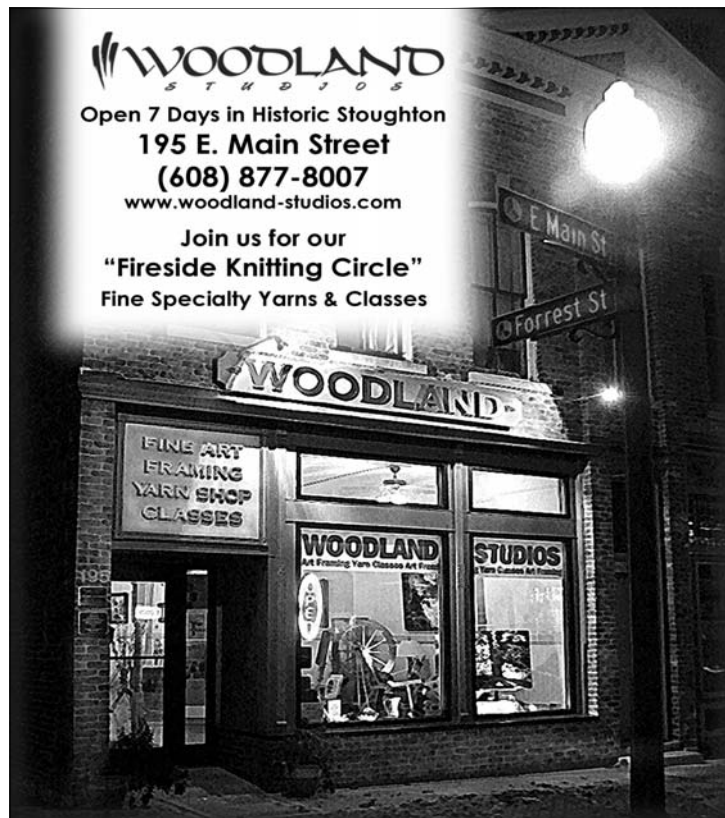
Threads that have been ended in the middle of a row often make their unsightly way to the right side of a garment and stitches around these are often irregular.

### Choosing a Needle Size for Unfamiliar Yarn

Double your yarn and thread it through the closest size hole on your needle gauge. Whichever hole it fits through the neatest (neither tight nor with gaping spaces around the yarn) is the best needle size to do your first swatch with.

### Reducing Pilling on a Finished Garment

Add 2 or 3 drops of glycerine in the water for a complete cycle in the washing machine. If it's a wash by hand garment, use only 1 drop because it may become greasy. Glycerine gives back softness to the yarn and you can use in with fabrics too— but NEVER DRY BY MACHINE! It will stick and make all your efforts useless.



1541 Bellevue St.  
Green Bay, WI 54311  
(920) 884-5258  
Fax (920) 884-5259  
www.montereyyarn.org

# Yarn

Monterey

*obsessive knitters reward: every completed card entitles bearer to \$20.00 in free merchandise (classes & sale items excluded)*

# Lakeside Fibers

*I love them just a yarn store!*

**Store Hours:**  
Monday: 10-8  
Tuesday: 10-6  
Wednesday: 10-8  
Thursday: 10-6  
Friday: 10-5  
Saturday: 10-5  
Sunday: 11-3

**Don't Forget -  
Inside LF:  
The Washington Hotel  
Coffee Room!**

402 W. Lakeside St., Madison, WI

**Susan's  
Fiber  
Shop**

**N 250 Hwy. A, Columbus, WI 53925**

Phone: (920) 623-4237 Fax: (920) 623-0120  
Orders Only 888-603-4237

## 'Tis The Season

**A Christmas Store  
with a Yarn Corner**

7507 Hubbard Avenue  
Middleton, WI 53562  
(608) 836-3749

**Store Hours:**  
Monday-Friday 10-5  
Saturday 10-2



## Peer Pressure

I admit that since Patty S. arrived in Sister Mary Patrick's third grade class with starched petticoats, I have been a victim of peer pressure. I immediately went home and requested that my mother also starch and iron my petticoats. She deferred using the lame excuse that since I had three siblings in the house, age range three to seven years, and she didn't have the time to administer to my wardrobe as requested. She was, however, willing to show me how to do it. Since I also had better things to do, mostly involving getting out of jobs around the house, I reluctantly decided I could survive the social rigors of third grade without starched petticoats.

However, since that moment, peer pressure has been a constant in my life and is no longer limited to starched underwear. If you have been watching any television over the last few weeks, you will be aware that Toyota is having a sale that is; "THE CHANCE OF A LIFETIME." I am aware that Toyota has a sale almost every other day, but this one seems different as it is, and I quote, "THE CHANCE OF A LIFETIME." Surely, this means I should go out and immediately purchase a Toyota, even though I already have a Toyota that is not only paid off, but also running just fine. I have thought about this a great deal and have decided to pass on the "CHANCE OF A LIFETIME." I will probably regret this decision later— just like my decision to not purchase white go-go boots in eighth grade.

The same peer pressure applies to my knitting. Once a week, a small group of us get together and knit. Most of the members are phenomenal knitters who actually finish projects on a regular basis. I lust after their knitting because their projects are off the needles and can actually be worn, which is a foreign concept to me. So I carefully write down the names of their patterns and the yarns they use. Then I race home and surf the Internet to see if it is available. If they have purchased the pattern locally, I pick the next opportune moment to hit that store, fondle the yarn, and purchase the pattern. Sometimes I can even afford the yarn. Then I tuck it away until I can actually get a project off the needles. Unfortunately, there is the problem. I have to actually finish a prior project....

There are those who call this process "Inspiration." However, until Patty S. showed up in my class, I didn't know starched petticoats were necessary to my continued existence either. The same process applies to these projects.

Here are the "inspirational projects" from last week—

- \* Amy Anderson's Smoke Ring pattern in *JitterBug*. It looks gorgeous over a plain black sweater. Honest, you have to knit this! (Lakeside Fibers)
- \* Norwegian mittens in Jamieson's Shetland Spindrift. I resisted Norwegian, but I am hooked on doing an Estonian pattern which is left over from peer pressure foisted upon me by Sandy de Master and Mary Germain when they spoke at a meeting.

- \* A variation on the mistake rib stitch where you only have to knit and slip, no purling. (Ask Amy Anderson)

Honest, you just have to knit these projects...and buy a new Toyota. After all, it is "THE CHANCE OF A LIFETIME!"

-Cathy Olig





**Blackberry Ridge Woolen Mill**

**Wonderfully Soft Yarns From Our Mill**

Featuring our own special designs in patterns, kits and yarns

3776 Forshaug Road, Mt. Horeb, WI 53572  
(608) 437-3762  
www.blackberry-ridge.com

We are a working mill and our shop is open by appointment only, please call ahead.

**The Yarn House**

**Shirley Grade, Owner**  
940 N. Elm Grove Rd.  
Elm Grove, WI 53122  
Phone: (262) 786-5660  
Fax: (262) 786-5620  
theyarnhouse@tds.net

Hours:  
Mon, Tues, Thurs, Fri: 10-4  
Wed: 10-6 Sat: 10-3





**The Dragonfly Yarn Shop**

**Kerri A. Shank, Owner**  
1327 N. Wright Rd. Ste. 5A  
Janesville, WI 53546  
(608) 757-9228  
www.dragonflyyarnshop.com

**Store Hours:**  
Mon-Fri 10 to 5  
Sat 10 to 4  
Sun 12 to 4  
Closed Tues

Fine Wool, Luxury Fibers, Addi Turbo, Crystal Palace Classes

## 2007-2008 MKG-Charity Knitting Challenge - Baby Sweaters

Our total for knitted charity items so far is 326. Our goal for the year is 500. Thank you to all MKG members who have participated/are participating/will participate in the this year's charity knitting challenge.

January's knitting project is a baby sweater. This month we have a special incentive to encourage members to make donations. When you bring your knitted item to January's meeting, you'll have a opportunity to enter your

name into a special drawing. Lucky knitters will receive special surprise gifts.

With this year's charity challenge, we believe that an item made by hand and with love is more valuable than a store-bought one. All children deserve to have something special made just for them. Each member of the MKG has the power to create something lovely, and if we band together, we can create hundreds of lovely things—

hundreds of loving hands creating comfort and warmth for children in the Madison area.

Here's a reminder of the featured charity projects for each month:

February: chemo hats

March: Comfort shawls

April: Baby booties

May: Knitter's Choice

And, of course, every month is Knitter's Choice!

### John Doe's Raglan Sweater designed by Abigail Goss

*Your basic TOP-DOWN adaptable raglan sweater*

SIZE: 18" chest, 5-10 LB (20" chest, 3-6 months)

#### Materials

4 oz sport weight yarn

Size 10 1/2 circular needle (straight will work also, it's just more comfortable on circulars)

Size 8 straight needles (for ribbing)

4 markers or spare yarn

(Notes: Follow directions in parenthesis to make newborn size. Work pattern as written. Inc. consists of knitting in front and back of specified st. Buttonholes: I didn't write buttonholes into the pattern because a small button will fit through the band without the extra created hole. However, when making the sweater in worsted weight yarn, I find it helpful to work the following buttonhole every 5 ridges (k to last 3 sts, YO, k2tog, k1)

#### Yoke:

With sz. 8 needles, Cast on 48-Work 3 rows of 2x2 ribbing, working last row onto the 10 1/2 needles. Continuing in ribbing, on row 4, place markers as written below.

Row 4(continue ribbing 2x2): work 9, Place marker (PM), Work 7, PM, work 16, PM, work 7, PM, work 9

Row 5:K4 (K to 1 sts before marker, INC, sl marker, INC.) Rep across till last 4 sts. K4

Row 6: (and ALL WS): K4, Purl to last 4 sts, K4

Rep Row 5 and Row 6 until the row count matches as follows: (136 sts) 1st FRONT 20; 1st SLEEVE 29; BACK 38; 2nd SLEEVE 29; 2nd FRONT 20

Continue working in stockinette st; inc. only on K rows. Continue increasing ONLY in front and back section. DO NOT increase anymore in the sleeve section (29sts in sleeve section) until front sections contain 21 sts and back section has 40 sts. End with purl row.

#### Sleeves:

K across first front, Remove marker, place these sts on spare needle or st holder. K across 1st sleeve section. TURN, P across.(29sts)

Work back and forth on sleeve section in stockinette st until it measures 4 1/2" from end of raglan inc. K2tog on last k row. Rib with sz. 8 needles for 2x2 ribbing for 1". Cast off, leave tail for weaving tog.

Place front sts that are on holder back on circular, attach yarn and K across back (40sts), sl marker and K across sleeve.

Place 2nd front stitches on holder. TURN, P across sleeve section only.

Work back and forth on sleeve section in stockinette st until it measures 4 1/2" from end of raglan inc. K2tog on last k row. Rib with sz. 8 needles for 2x2 ribbing for 1". Cast off, leave tail for weaving tog.

Place sts that are on holder on other end of circular and attach yarn and K across 2nd front.

#### Body:

Continue with 10 1/2 needles in stockinette stitch (K 1 row, P 1 row) with K4 border at the beg and end on every row until body is desired length or 5 1/2" from underarm.

Rib with sz. 8 needles 2x2 for 1". Fasten off.

Weave in end, Sew sleeve seam.





## Classifieds

From the **YARN HOUSE**, Elm Grove: Come and knit a heart for your beau! January 19, 1:00-3:00 p.m.



## Treasurer's Report 12/01/07

As of December 1, our guild's balances are as follows:

Checking      \$10,957.98  
Savings        \$3,049.85

-submitted by Kathy Trudell



As I get older, I just prefer to knit.

- Tracey Ullman



## la bella vita fibre gallery

*local & fair trade fibres & accessories for the aspiring  
or avid fibre artisan*

154 high street  
mineral point. wi 53565  
608.987.2105

[www.labellavitamp.com](http://www.labellavitamp.com)      [labellavitamp@yahoo.com](mailto:labellavitamp@yahoo.com)

## The Black Sheep



10 E. Main St.      Evansville      608-751-2372

Wed, Fri & Sat    10:00 a.m.- 4:00 p.m.

Thursday    10:00 a.m.- 7:00 p.m.

**Come and see our new selection of  
yarns from Cascade.**

**New Winter Stock is arriving every week!**

**Remember to show your MKG member card  
and receive a 20% discount on all regularly-  
priced yarns you purchase.**

## 2007-2008 Board of Directors & Committee Chairs

President  
Vice President  
Treasurer  
Secretary  
Historian  
Knit Out Chair  
Publicity  
Director at Large  
Director at Large

Mary Jo Harris  
Connie Burmeister  
Kathy Trudell  
Jane Newman  
Elizabeth Prose  
Judy Pruski  
Gail Snowden  
Janette Hermanson  
Kay Moffat

Hospitality Chair  
Librarian  
Community Projects Chair  
Newsletter Editor  
Membership Chair  
Knit-Aid Chair  
Knit-In Chair & Vendor Liaison  
Advertising Chair  
Website Chair

Susan Aehl  
Barb Armstrong  
Pat Berhardt  
Jayne Coster  
Carol Huber  
Robbie Preston  
Karen Scammell  
Marcia Stern  
Ann Varda

Weaving  
Spinning  
Knitting  
Yarns  
Fibers  
Tools  
Books  
Lessons

## STUDIO S FIBRE ARTS

M, T, 1-5; Th, F, S, 10-3;  
Closed Wed. and Sun.

S.J. Woods  
W8903 County Rd. A  
(Corner of 89 and A)  
Delavan, WI 53115-2451  
(608) 883-2123  
[sjfiber@jvl.net](mailto:sjfiber@jvl.net)

## Sandy's Palette LLC

**Sandy Jones**  
305 Maiden Street  
Mineral Point, WI 53565  
(608) 987-1346  
[sandy@sandyspalette.com](mailto:sandy@sandyspalette.com)  
[www.sandyspalette.com](http://www.sandyspalette.com)



**Hand Dyed Yarns & Roving for Knitters & Spinners**

## Getting to Know Our Members — Judy Pruski



Everyone seems to have these great stories about learning to knit. I have to disappoint you all. I actually do not remember learning how to knit. My mother knits, as did her mother from whom she learned. However, my grandmother was from Germany—so my mom knits continental. I, on the other hand, knit English/American style, and I have to throw my yarn even

when I crochet. My mom and I think that I probably learned to knit in Brownies or Girl Scouts which means sometime before I turned 11 as I had quit scouting by sixth grade. I do have vague memories of a long pink garter stitch scarf.

I remember learning to purl in college and knitting my first sweater and afghan then. That was so long ago that K-mart still sold wool yarn. It wasn't until many years later that I finally realized that the afghan I knit that summer between freshman and sophomore years was a lace pattern. I was just following a pattern from a woman's magazine.

The first real yarn store that I saw was on State Street in Madison when I was visiting a friend here in college back in the 70s.

I've been knitting for over 40+ years now. My yarn stash and my books cover most flat surfaces in my condo. There are some yarns in my stash that are older than some of the guild members. I probably own more teal yarn than most shops. However, that doesn't stop me from buying more!

My knitting blog is <<http://zbyzskoknits.livejournal.com>> and I am "zbyzskoknits" on Ravelry.



## IRIS FINE YARNS

132 E. Wisconsin Avenue  
Appleton, WI 54911  
(920) 954-9001

[info@irisfineyarns.com](mailto:info@irisfineyarns.com)  
[www.irisfineyarns.com](http://www.irisfineyarns.com)

## Fabulous Yarns Await...

*At the Midwest's First Café  
and Yarn Shop*

- \*Berroco
- \*Cascade
- \*Claudia Handpaints
- \*Dale of Norway
- \*Elsabeth Lavold
- \*Fleece Artist
- \*Hand Maiden
- \*Mountain Colors
- \*Nashua
- \*Rowan
- \*Slibui Knits
- \*Universal Yarns
- \*Huge Sock Department
- And so many more...
- Plus: Books \* Patterns
- \*Interweave Press Publications
- \*Vogue Knitting
- \*Accessories
- \*Needles & Other Notions



**Hours:**

Monday & Friday 6:30am-6pm  
Tuesday-Thursday 6:30am-8:30pm  
Saturday & Sunday 7am-5pm  
\*Late Night Knitting: 1st & 3rd Friday of  
Every Month- Open until 11pm!

125 S. Main St. Verona, WI 53593 608-848-2755 [www.knitandsip.com](http://www.knitandsip.com)



**Custom Processing  
Artisanal Yarns**

**Our Brand**

[www.argylefibermill.com](http://www.argylefibermill.com)

200 E. Milwaukee St.  
Argyle, WI 53504  
(608) 543-3933



2614 Monroe St.  
Madison, WI 53711  
(608) 238-0121

**Store Hours:** Monday 12-5; Tuesday thru  
Saturday 10-5 & Thursday until 8 pm



**2008 MADISON KNITTERS' GUILD KNIT-IN**  
**Saturday March 8, 2008**  
**Bishop O'Connor Center 702 South High Point Rd Madison**  
**Featured Speaker: Lily Chin ([www.lilychinsignaturecollection.com](http://www.lilychinsignaturecollection.com))**  
**Outstanding Classes and Teachers**  
**20 Vendor Marketplace open 8 a.m. - 4 p.m.**

A block of rooms is being held at the Radisson Hotel at a special rate of \$99 (plus tax) per night per room. Call (608) 833-0100. Gathering room for knitting and visiting at the Radisson on Friday March 7 from 7-9 p.m. All are welcome, no charge.

**Class Descriptions:**

**Beginning Lace taught by Amy Detjen.** Knitting lace is not actually difficult, but it doesn't hurt to learn some useful tools for helping to read the chart, keeping track of your stitch count, knowing which row comes next, and repairing minor lace errors. We'll also discuss, but hope we never need, how to make major repairs to lace knitting.

Skill Level: Beyond Beginner

Materials: one ball of light colored yarn (anything but navy or black) and needles (straight or circular) in size appropriate for your yarn. Use needles one or two sizes larger than you would use for Stockinette St.

Homework: none

**Knit to Fit taught by Kathy Digman.** In this class, you will learn about gauge, how it effects your pattern, and how to adjust the pattern. You will also take and record your own measurements to apply to knitting patterns. Finally, we will highlight key areas of a sweater that result in a better fit.

Materials: pencil, paper, tape measure, and a sweater project that didn't turn out as anticipated. There will be handouts for each student @\$2.

**Steeks taught by Carol Rhoades.** A steek is an area of knitting to be used for cutting open necklines, cardigan fronts, or armholes. In this class, you will learn several methods for setting up, stabilizing, and finishing steeks. Pre-class homework will be assigned.

**Toe Up Toes taught by Ann Varda.** Learn a new cast-on (Judy's Magic Cast On) that works well for toe up socks or anything else that uses a provisional cast on. Also included in this class will be a typical sock toe, a short row sock toe, and a garter stitch toe.

**Beaded Knitting taught by Mo Brown.** In this class, you will learn several different techniques to include beads of various types and sizes into projects such as socks, scarves, lace shawls, and felted bags. Learn how to combine two enchanting mediums: fiber and beads!

**Short Rows taught by Amy Detjen.** Have you heard of using "short rows" to shape garments but don't know why a person would? Or have you tried Short Rows and aren't satisfied with the results? Learn the how, why, when, and where of using Short Rows. We'll discuss the traditional "wrap and turn" method, the "yarn over" method, and the Japanese method.

Skill Level: Beyond Beginner

Materials: one ball of yarn, needles (straight, circular, or double-pointed) in size appropriate for your yarn, two markers that can be removed, such as a coilless safety pin.

Homework: Begin a swatch as follows: Cast on 30 sts, knit 3 rows (Garter Stitch) then work 4-6 rows of Stockinette St (knit on one side purl on the other). Bring this swatch to class ready to knit.

**Finishing taught by Marie Duquette.** Simple tricks to make finishing easier and professional looking. Includes techniques for weaving in ends, seaming, blocking, and the 3-needle bind off.

**Double Knitting taught by Elizabeth Prose.** Double Knitting is a method of creating two layers of fabric at one time on straight needles. In this class, you will learn how to cast on, create double knitted fabric with one and two colors, and bind off. It is an excellent technique for creating very warm and reversible knitted items.

Materials: two colors of worsted weight yarn, appropriate size needles for yarn, and basic knitting tools (scissors, tape measure, tapestry needle, row counter, etc.)

2008 MADISON KNITTERS' GUILD KNIT IN REGISTRATION  
 March 8, 2008  
*Registration limited to MKG members only until February 1, 2008*

Name: \_\_\_\_\_

Address: \_\_\_\_\_

City/State/Zip: \_\_\_\_\_

Phone # : \_\_\_\_\_ Email: \_\_\_\_\_

MKG Member?     yes     no

- |   |   |   |   |
|---|---|---|---|
| <input type="radio"/> <b>FULL DAY</b><br>\$45 member<br>\$55 non-member | <input type="radio"/> <b>HALF DAY</b><br>\$30 member<br>\$40 non-member | <input type="radio"/> <b>KNIT, SHOP &amp; EAT</b><br>\$15 | <input type="radio"/> <b>SHOP ONLY</b><br>\$3 |
|---|---|---|---|

Full Day--Choose one class and Lily Chin session **OR** choose two classes. Choose lunch option.  
 Half Day--Choose one class **OR** Lily Chin session. Choose lunch option.  
 Knit, Shop and Eat: Choose lunch option.  
 Shop Only.

Lily Chin--Design Inspirations    (*Same presentation morning and afternoon.*)

Classes: Please indicate first and second choice. Place 1 in box for first choice; 2 for second.  
 Classes fill on first come basis. Limit 16 per class.

9-11 am		11am-1 pm	1-3 pm	
<input type="checkbox"/> Beginning Lace	Amy Detjen	Market And Lunch	<input type="checkbox"/> Beaded Knitting	Mo Brown
<input type="checkbox"/> Knit to Fit	Kathy Digman		<input type="checkbox"/> Short Rows	Amy Detjen
<input type="checkbox"/> Steeks	Carol Rhoades		<input type="checkbox"/> Finishing	Marie Duquette
<input type="checkbox"/> Toe up Toes	Ann Varda		<input type="checkbox"/> Double Knitting	Elizabeth Prose

Lunch Options: Choose one.

- |                          |   |
|--------------------------|---|
| <input type="checkbox"/> | Grilled Vegetables on Croissant, Pasta Salad, Lemon Bar |
| <input type="checkbox"/> | Cobb Salad, Baguette, Lemon Bar                         |
| <input type="checkbox"/> | Turkey Club Wrap, Potato Salad, Lemon Bar               |

Enclose check payable to Madison Knitters' Guild.

Enclose sase if you wish confirmation/ homework via USPS. All others check that email address is legible. Confirmations will be sent via email unless requested otherwise.

Please indicate if you would like     Map to O'Connor Center     Map and List of Hotels

Mail to: Carol Huber    3013 Nottingham Way    Madison WI 53713



## MKG Calendar

January 14	MKG Meeting	6:30 p.m.	Monona Community Center; Annual Holiday Potluck; Vendors: Dragonfly Yarn Shop & The Sow's Ear Chalet Landhaus, New Glarus
February 1-3	Knitters' Retreat		
February 11	MKG Meeting	7:00 p.m.	Monona Community Center; Speaker: Carol Rhoades; Vendors: Sutter's Gold 'n Fleece & Argyle Fiber Mill
March 8	Knit In 2007	9:00 a.m.	Speaker: Lily Chin
March 10	MKG Meeting	7:00 p.m.	Monona Community Center; Speaker: Lily Chin; Vendors: Bead Bin & Woodland Studios
April 14	MKG Meeting	7:00 p.m.	Monona Community Center; Speaker: Susanna Hansson; Vendors: Needles 'n Pins & The Yarn House
April 19	Knitting Safari		Mark your calendar! Details to follow...
May 12	MKG Meeting	7:00 p.m.	Monona Community Center; Annual Appetizer & Dessert Buffet & Fashion Show



## Other Fiber Events

March 9-13	Lily Chin workshops	Email knitterstreat@wekz.net and ask to be put on work shop email list.
April 13-15	Susanna Hansson	Email knitterstreat@wekz.net and ask to be put on work shop email list

Madison Knitters Guild

397 Starling Lane

Madison WI 53704