



# MADISON KNITTERS' GUILD KNITTERS' KNEWS

Volume 28 Issue 7

March 2008

## Welcome Lily Chin on March 10



Lily M. Chin is an internationally famous knitter and crocheter who has worked in the yarn industry for over 25 years, as a designer, instructor, and author of four books on knitting and crochet. She was the first American knitwear designer to create a line of fashion yarns under her own name, The Lily Chin Signature Collection, launched in 2005 with CNS Yarns.

Named a "Master Knitter" by Vogue Knitting, this NYC native has been involved in some aspect of the fashion industry since age 13. She's one of the 10 featured designers in "Vogue Knitting American Collection." Lily designs for magazines and yarn companies and does fabric development (comes up with stitches) and knitdowns (works out samples) for Seventh Ave, from the Gap to Diane von Furstenberg, from Vera Wang to Ralph Lauren. Her workshops, lectures, and seminars on hand and machine knitting and crochet are conducted throughout the U.S. and Canada and cruises around the world.

On March 10 at the Monona Community Center, we welcome Lily to our monthly meeting for a lesson on CAD—Computer Aided Design. Even if you are computer-illiterate, you may want to know what all the fuss is about and what the possibilities are that computers offer. Computers have been given a lot of attention lately. Deemed the key to the future, we will see how designers and fiberartists can use electronic media as a very useful tool to aid the creative process.

## March Vendors

Bead Bin  
&  
Woodland Studios

### Monthly Meeting Time

7:00 p.m.

### Upcoming Programs

- \* April 14  
Susanna Hansson
- \* May 12  
Dessert Buffet &  
Fashion Show

## From Our President—Mary Jo Harris



Hello Knitters!

I can't believe it's March already. It seems that we just had Christmas! Although, I have to admit that I'm really ready for Spring and warmer weather.

Here are some of my current MKG-related thoughts....

**POTLUCK CORRECTION** – Last month I said that MKG would provide sandwich meat and buns at both the January and May potlucks. This was an incorrect statement. What I SHOULD have said was that the sandwich meat and buns would be provided at the JANUARY potluck only. MKG will not be providing sandwiches at the May Salad and Dessert potluck. I'm sorry about the mistake and hope that my error doesn't cause too much confusion. Members with last names starting with the letters (M-Z) are asked to bring a salad or dessert.

**KNIT ALONG CHARITY CHALLENGE** – February donations put us well over our goal of 500 items. Thank

you to everyone who has donated items this year. See the details about this month's challenge item later in the newsletter. This just keeps getting better and better!

**KNITTING SAFARI** – Kate Findley is finalizing the plans for our Knitting Safari scheduled for April 19th, 2008. Because we're going to the Chicago area this year, the day will be a bit longer. Also because we expect this to be of interest to a lot of people, the board has decided to take reservations for members only until March 15, 2008, with non-members being able to register after March 15, 2008. The cost for members will stay at \$45 while the cost for non-members will be \$50. See more details about the Safari later in the newsletter.

**KNIT-IN** – The final details are being prepared as this year's Knit-In is almost here. We have a record number of reservations this year so it should be an exciting event.

Members of the Madison West Knitting Club will be staffing the table for those that come to shop or to hear Lily Chin and shop. In addition, they will be having a bake sale to raise money for their club's needs. You're welcome to buy baked goods freely.

*continued on page four...*

## Meeting Minutes—February 11, 2008

**VENDORS:** Argyle Fiber Mill and Sutter's Gold 'n Fleece

**ATTENDANCE:** 150

President, Mary Jo Harris, called the meeting to order at 7:00.

**RETREAT:** Mary Jo reported that the retreat at New Glarus went well. Photos from the event are posted on the Charity Knitting blog site. Dates were announced for next year's retreat—January 31-February 2, 2009.

**GUESTS and NEW MEMBERS** were announced.

**CHARITY KNITTING CHALLENGE:** Gail Snowden announced that 152 items were collected last month. An approximate count of tonight's donations was 50+ which puts the Challenge over the goal of 500 items. Gail showed a representative sampling of tonight's donations. Next month's focused item has been expanded from comfort shawls to include baby blankets. As always, knitters are welcome to knit their choice of charity items.

**KNIT-IN:** Roughly 160 people have signed up for the Knit-In. The classes are filled, but people can still come for Lily's lecture, lunch and shopping. Those wishing to attend, need to pre-register only if staying for lunch so that the correct number of lunches can be ordered ahead of time. One can pay at the door for Lily's lecture and shopping.

There will be 20 vendors in the market area.

A Gathering Room for knitting will be available Friday evening (3-7-08) at the Radisson Hotel from 7:00-9:00 PM.

**STATE FAIR:** Mary Jo asked if anyone had participated in the past at the State Fair Competition. There was a form in the entry area to sign if you had entered items for judging.

**ELECTIONS:** Mary Jo requested interested people to sign up for elections to the Guild Board of Directors. The Board meets one night a month in addition to the regular monthly Guild meeting. Additional "homework" will be required at times.

**KNITTING SAFARI:** Kate Findley is the chair of this committee and spoke about the upcoming plans. The Safari will be Saturday, April 19, 2008. She stated that this year's Safari is heading to Chicago to tour Lorna's Laces. Lunch will probably be at a café that donates a percentage of their profits to the homeless. Stops at Arcadia Knitting and The Fold in Marengo are also planned. The number of participants may be limited to around 30 due to size restrictions at the lunch facility. More information will be forthcoming when the plans have been finalized.

**SPEAKER:** Tonight's speaker was Carol Rhoades. Carol

is the Technical Editor of *Spin-Off* Magazine. She presented a talk and slide show on "Knitting in Finland: Old and New Traditions." Carol described various knitting and other traditions; one of which was *Korsnas*, a technique that combined both knitting and crochet on the same mitten or sweater. Other techniques included: Rya-mittens with shag inside like rya rugs; Rovaniemi mittens with patterning only on the front; Kalevala—new designs with cables; nalbinding—needle weaving; and birch bark weaving similar in look to entrelac. Her slides showed examples of these techniques as well as the countryside and architecture of Finland. Carol also displayed knitted samples of the techniques and yarns from Finland.

**SHOW AND TELL** followed a 15 minute break to view Carol's samples and shop at tonight's vendors. Participants were: Judy Pruski, Elizabeth Prose, Muriel La Rose, Amy Anderson, Ann Varda and Alison Warren.

*Respectively submitted by Jane Newman*



### Treasurer's Report 2/17/08

Checking Account: 16,044.79

Saving Account: 3,052.70

Total: 19,097.49

**Note:** A complete treasurer report detailing revenues, expenditures will be presented in the April Newsletter after the Knit-In expenditures and revenues are determined.

*-Kathy Trudell*



## la bella vita fibre gallery

*local & fair trade fibres & accessories for the aspiring or  
avid fibre artisan*

154 high street  
mineral point. wi 53565  
608.987.2105

[www.labellavitamp.com](http://www.labellavitamp.com)

[labellavitamp@yahoo.com](mailto:labellavitamp@yahoo.com)

## MKG Board Member Nominations



**I**t is time to start thinking about our board member election coming up in May. We have nine members on the MKG Board. Board terms are for three years with one-third of the seats being up for election each year. Mary Jo Harris, Jane Newman and Janette

Hermanson are finishing their terms in May.

The Board of Directors meets on a monthly basis throughout the year, however at times there is no meeting held in December. Board meeting dates are generally set for an evening during the week following our regular monthly guild meeting at the Monona Community Center. Currently, the board meetings are held in the classroom of Whole Foods located on Madison's west side on University Avenue beginning a 6:30 p.m. Location is subject to change during the year.

Most board members hold either an office and/or chair a committee. Officers and committee chairs are determined by the board members at the first board meeting after the May election. Office holders usually change every few years as the make-up of the board changes. However, committee chairs may or may not be board members, so these may change more or less frequently as needs of the guild dictate. Offices on the board include: President, Vice President, Secretary and Treasurer. Committees include: Membership, Historian, Publicity, Librarian, Community Projects, Advertising, Newsletter, Webmaster, Knit-In, Knit-Aid and Hospitality.

In addition to monthly board meetings, there may be some "homework" required between meetings depending on the office/committee chair held.

While the MKG board is a working board, members also find time to develop new friendships. Board members tend to have a lot of creative ideas, are dependable and are committed to making our guild a good experience of all of our members.

If you have any questions about being a board member, please feel free to talk to any current board member about their experience of this service to our guild. If you would like to be a board member or if you know someone who is interested in being a board member, please contact Mary Jo Harris or a current board member. You won't regret this wonderful opportunity to serve our guild! (**Note:** Please plan to provide a short biographical sketch and photo.)



### Don't Forget about the Knit-Aid Desk

Each month from 6:00 p.m. until the start of our meeting, the Knit-Aid desk is available for those who need help with their projects.

The Guild ball winder and swift will also be set out for your use. If you are interested in being a volunteer to staff our desk, please contact Robbie Preston.

## The Black Sheep Yarn Shop

10 E. Main St.    Evansville    608-751-2372

Tues. Wed. & Sat.    10:00 a.m.- 4:00 p.m.  
**Thur. & Fri.    10:00 a.m.- 7:00 p.m.**

NEW

Check out our new website for valuable coupons for the MKG Knit-In on March 8th.

[www.theblacksheep yarnshop.com](http://www.theblacksheep yarnshop.com)

Remember to show your MKG member card when you visit the store and receive a 10% discount on all regularly-priced yarns.

2614 Monroe St.  
 Madison, WI 53711  
 (608) 238-0121

Store Hours: Monday 12-5; Tuesday thru Saturday 10-5 & Thursday until 8 pm

Custom Processing  
Artisanal Yarns

[www.argylefibermill.com](http://www.argylefibermill.com)

Our Brand

200 E. Milwaukee St.  
 Argyle, WI 53504  
 (608) 543-3933

Michele Polster, Owner

11 S. Main Street  
 Mayville, WI 53050  
 (920) 387-9960

[www.looseendsyarnshop.com](http://www.looseendsyarnshop.com)  
 michele@looseendsyarnshop.com

Store Hours:  
 Tues, Wed, Fri 10-5 pm  
 Thurs Noon to 8 pm  
 Sat 10-3 pm

**From Our President on Page one...**

Also, we will be selling MKG tote bags at the Door Prize table in the Marketplace during the Knit-In also. Be sure to stop by and get one!

Remember, too, that we will have a Hospitality Room at the Radisson Hotel on Grand Canyon Drive on Friday, March 7, from 7:00 PM to 9:00 PM. Feel free to bring your knitting, and enjoy the company of others at the same time!

**BOARD NOMINATIONS** – Plans are to have short nominee biographies along with photos in the next newsletter. We still need more nominees though. Please read the article about being a board member on page 3, and then let a current board member know that you'd be willing to run for a board opening. We NEED you!

**PLANS FOR NEXT YEAR** – The board has already started planning for next year. If you have any ideas for speakers, programs, or activities, please let a board member know.

*Mary Jo Harris, President*

**BEAD BIN** BEADS & BEADING SUPPLIES  
 414 Westgate Mall/Madison, WI 53711  
 (608) 274-0104  
 10 - 9 Mon. - Fri. 10 - 5 Sat. 12 - 5 Sun.

**Knitting Tip**  
**The First Stitch.** Always slip the first stitch and always knit the last stitch regardless of pattern instructions. This gives a tighter, neater edge to sew up, making the garment hang better. This type of edge also sews up easier on sleeve cuffs. You can sew them flat by picking up the edge bobble, leaving no lumpy seams when the cuffs are turned back.

**Stitcher's Crossing**  
 Great Selection of Yarn and Needles; Classes for Beginners to advanced; Quilting & Cross Stitch Supplies  
 6122 Mineral Point Road  
 Madison, WI 53705  
 (608) 232-1500  
 Info@sticherscrossing.com  
 Store Hours:  
 M-F 9:30-6:00 Sat 9:30-5:00  
 Thu until 8:30 Sun 12:00-4:00

You don't sew with a fork, so I see no reason to eat with knitting needles  
 -Anonymous

**The Knitting Room**  
 74 S. Main Street, Suite 101  
 Fond du Lac, WI 54935  
 920.906.4800  
 theknittingroom@charterinternet.net  
 Monday Closed  
 Tuesday 10-9  
 Wed & Thurs 10-5  
 Friday 10-3  
 Saturday 9-2  
 Kristin Johnson theknittingroomwi.com Beth Mannebach

**WANTED! Book Reviews**

This space is waiting for you to review your favorite book. Perhaps there is one that you absolutely love to knit from. Perhaps it is one from our Guild Library. Or maybe, there is a great "read" out there that you have listened to on tape or CD while knitting a sweater for a loved one. We'd like to hear about it! Please contact Jayne Coster if you'd like to share your comments on a favorite read!

Rating System	
*****	Excellent
****	Very Good
***	Good
**	Fair
*	Not Recommended

**Off the Beaten Path Yarnhouse**  
 215 Femrite Drive  
 Monona, WI 53716  
 Phone: (608) 221-0219  
 www.knitmeone.com

### Welcome New Members!

Please make the following new members feel welcome at our monthly meetings.

- NANCY BACH
- LISA BAUER
- ANDREW BROMAN
- LISA CANTRELL
- AMY CALKINS
- MEGAN CLAY
- GAYLE COX
- ANNE DORAN
- SUE GLORCH
- SHARON JOSWIAK
- VIRGINIA KOMINIAC
- BETH KUFFEL
- ALICE MREHOUSE
- MARIE SIFERD
- JEANETTE SUNDSTROM
- ELIZABETH TUTTLE
- DINAH VAN KREVEL-POLZIN
- ROSE WALDVOGEL
- MOLLY WALZ
- LORETTA ZINKEL



*Prairie Junction* Yarn and Needlework  
 LLC 227 EAST MAIN  
 SUN PRAIRIE, WI 53590  
 (608) 837-8909

M-F 10-5  
Sat 10-4

*Sue Alstad*

WEAVING • SPINNING • DYEING • KNITTING  
 QUILTING • SURFACE DESIGN • BASKETRY  
 HANDMADE PAPER • WOODCARVING

### Sievers

SCHOOL OF FIBER ARTS

Birch Court • Washington Island, WI 54246  
 (920) 847-2264  
[www.sieversschool.com](http://www.sieversschool.com)

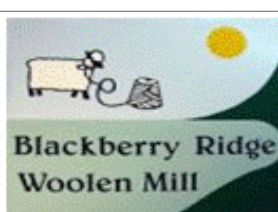
RETAIL SALES OF YARNS • BOOKS  
 FIBER ARTS • FINE CRAFTS

### Gone Knitting, LLC

122 W. Court St.  
 Richland Center, WI 53581  
 608/649-KNIT (5648)

Yarn ~ Supplies ~ Lessons

~ Mary Oosterhous ~



### Wonderfully Soft Yarns From Our Mill

Featuring our own special designs in patterns, kits and yarns

3776 Forshaug Road, Mt. Horeb, WI 53572  
 (608) 437-3762

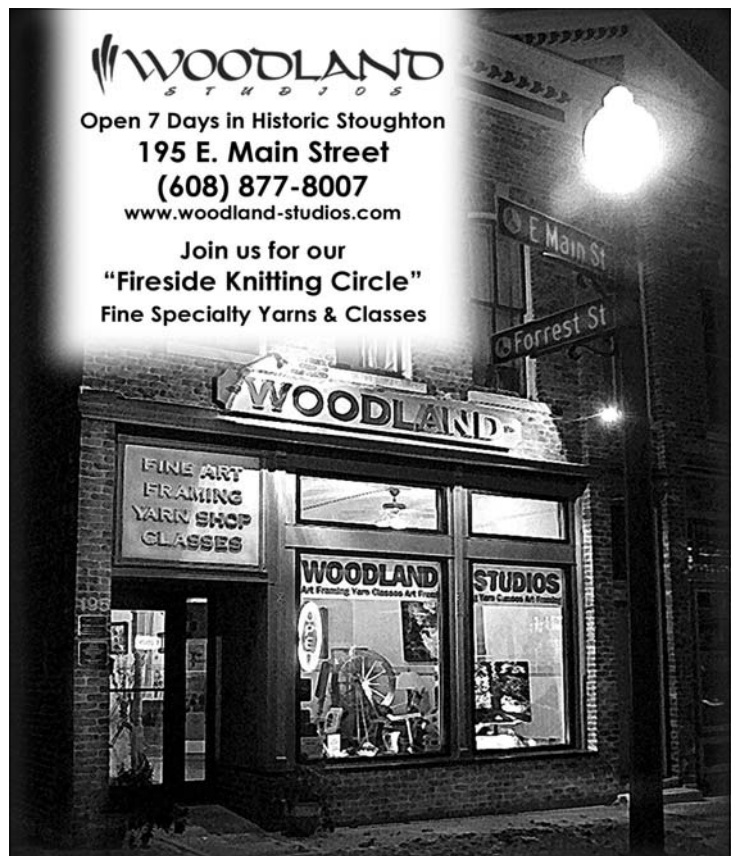
[www.blackberry-ridge.com](http://www.blackberry-ridge.com)

We are a working mill and our shop is open by appointment only, please call ahead.

### WOODLAND STUDIOS

Open 7 Days in Historic Stoughton  
 195 E. Main Street  
 (608) 877-8007  
[www.woodland-studios.com](http://www.woodland-studios.com)

Join us for our  
 "Fireside Knitting Circle"  
 Fine Specialty Yarns & Classes



## Knitting Retreat—February 1-3



From left: Judy Armstrong & Tia Marshall chatting with Sue Barnes



Mary Jo Harris



Yvonne Respalje



Goodies from New Glarus Bakery



Tia Marshall & Judy Armstrong


"...and a good time was had by all." Never has this phrase been more true than when used to describe the MKG Retreat held February 1-3 at the Chalet Landhaus in New Glarus. Approximately 25 avid knitters stayed overnight and several more came to knit for the day on Saturday. It was a relaxing time filled with good treats (doughnuts from the New Glarus bakery—yummy!), a comfortable place to knit and a chance to meet new friends who share a similar love of knitting. The opportunity to view each other's projects and finished garments was inspirational. To further inspire the participants, The Sow's Ear, Knitter's Treat, Off the Beaten Path and Argyle Fiber Mill donated many interesting yarns for a "Yarn Tasting."

Because the unanimous response was to repeat this retreat weekend next year, the Chalet Landhaus conference room was booked for January 31-February 2, 2009. Mark your calendars and join us for a great way to beat the winter blahs next year!

In the words of one of the attendees, Nancy Elmer: *I want the board to know that I had a great time at the retreat last weekend. It was a relaxing and enjoyable time. I met lots of wonderful women and feel that I made some friends. I am glad that it has been rescheduled again for next year and it is on my calendar...Thank you!"*

### Fabulous Yarns Await...

At the Midwest's First Café and Yarn Shop



**The Sow's Ear**

- \*Berroco
- \*Cascade
- \*Claudia Handpaints
- \*Dale of Norway
- \*Elsabeth Lavold
- \*Fleece Artist
- \*Hand Maiden
- \*Mountain Colors
- \*Nashua
- \*Rowan
- \*Shibui Knits
- \*Universal Yarns
- \*Huge Sock Department
- And so many more...
- Plus: Books \* Patterns
- \*Interweave Press Publications
- \*Vogue Knitting
- \*Accessories
- \*Needles & Other Notions

**Hours:**  
Monday & Friday 6:30am-6pm  
Tuesday- Thursday 6:30am-8:30pm  
Saturday & Sunday 7am-5pm  
\*Late Night Knitting: 1st & 3rd Friday of Every Month- Open until 11pm!

125 S. Main St. Verona, WI 53593 608-848-2755 www.knitandsip.com



## 2007-2008 MKG-Charity Knitting Challenge—Comfort Shawls/Baby Blankets

The Charity Knitting Challenge project for March is the largest project thus far—a baby blanket or a comfort shawl.

Pat Bernhardt points out that blankets for children need not be large enough to sleep under. Children undergoing painful medical procedures sometimes need a small blanket as a “love” to hug while in the hospital. Use machine washable yarn that is soft. You can find children’s blanket patterns all over the internet and in pattern books. One of the easiest, that also knits up quickly, is the Diagonal baby blanket pattern from Lion Brand. The pattern is all garter stitch and you can use big needles. Either use bulky but soft yarn, or hold two or three strands of soft lighter yarn together. Pattern is below.

Comfort shawls and the prayer shawl ministries have proven to be popular projects for many church knitting

### Baby Love Diagonal Baby Blanket Lion Brand® Pound of Love

#### GAUGE:

19 stitches = 4 in. [10 cm] in garter stitch (knit every row). **BE SURE TO CHECK YOUR GAUGE.** When you match the gauge in a pattern, your project will be the size specified in the pattern and the materials specified in the pattern will be sufficient. If it takes you less stitches and rows to make a 4 in. [10 cm] square, try using a smaller size hook or needles; if more stitches and rows, try a larger size hook or needles.

#### NOTES:

Circular needle is used to accommodate large number of stitches. Blanket is knit back and forth in rows just as if knitting with straight needles.

#### BLANKET

Cast on 5 sts.

Row 1: Knit.

Row 2: K 3, yo, k 2.

Row 3: K 3, yo, k 3.

Row 4: K 3, yo, k to end of row.

Repeat last row until you have 207 sts on needle.

Next (decrease) row: K 2, k2 tog, yo, k2 tog, k to end of row.

Repeat last row until 5 sts remain. Bind off.

#### FINISHING

Weave in ends.

### Prayer Shawl/Healing Shawl Lion Brand® Homespun®

#### GAUGE:

Exact gauge is not important to this project

#### NOTES:

Because different Knitting Ministry groups and individuals make prayer shawls in their own ways, there is a great deal of variation. This pattern gives a sample of how to make a knit or crocheted shawl. Your individual choices in yarn and needle/hook size will affect the finished size and thickness of the shawl, but there isn’t one “right” way.

#### Knit Version

Cast on 63 stitches or any multiple of three, such as 54, 57, or 60.

First row Knit 3, purl 3 to the end of the row.

Repeated row Turn and knit the purl stitches and purl the knit stitches.

Work about 2½ skeins in this pattern. Use the rest of the yarn for fringe, which can be from 3 inches to 9 inches long.

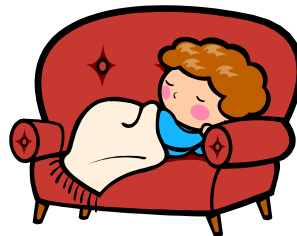
Knot the ends of the fringes to keep the yarn from frizzing.

groups. Because the shawls are for people in distress, physical or emotional, using machine washable yarn is important. Again, Lion Brand Yarn has a basic prayer or comfort shawl pattern, using a K 3, P 3 motif.

If you don’t think you can finish a blanket or shawl by yourself, Ask a friend to join in the knitting. Use the same or complementary yarn. Knit strips of a pre-determined length. Get together for coffee, tea, wine, etc., and sew the strips together! You will comfort yourself with friendship and with the knowledge that some unknown recipient will also be comforted.

See you all at the March meeting!!

-Gail Snowden



## MKG Knit-In 2008

All of our Knit-In classes on Saturday, March 8, are full, but there's plenty of room in the auditorium to hear Lily Chin! Please join us for the lecture, lunch, shopping, or just socializing with friends-- whatever fits your schedule. You may register in advance with Carol Huber (find the registration form at [www.madisonknittersguild.org](http://www.madisonknittersguild.org) or in the January or February newsletters). You may also register at the door. All are welcome to attend! We hope to see you at this year's Knit-In!



**NOTE: Pre-Knit-In Knitting.** Are you coming to the Knit-In on March 8? Can't wait? Whether you live in Madison or are just coming in for the weekend, please join other members of the Guild at the hospitality room at the Radisson Hotel at 517 Grand Canyon Dr. from 7-9 p.m. Hope to see you there!

### TIME

Time -- such a precious gift it is  
 To work, to read, and yes, to knit.  
 Time to listen to the birds sing;  
 To watch flowers appear in spring.  
 Time to dream of good future days  
 While our peaceful living stays.

-Minnie Gertz

No longer shall I paint interiors with men  
 reading and women knitting. I will paint  
 living people who breathe and feel and  
 suffer and love.

-Edvard Munch



Now these are what I call knitting needles!



**Store Hours:**  
 Mon-Fri 10 to 5  
 Sat 10 to 4  
 Sun 12 to 4  
 Closed Tues

**Kerri A. Shank, Owner**

1327 N. Wright Rd. Ste. 5A  
 Janesville, WI 53546  
 (608) 757-9228

Fine Wool, Luxury  
 Fibers, Addi Turbo,  
 Crystal Palace  
 Classes

[www.dragonflyyarnshop.com](http://www.dragonflyyarnshop.com)



## IRIS FINE YARNS

132 E. Wisconsin Avenue  
 Appleton, WI 54911  
 (920) 954-9001

[info@irisfineyarns.com](mailto:info@irisfineyarns.com)  
[www.irisfineyarns.com](http://www.irisfineyarns.com)



**Shirley Grade, Owner**

940 N. Elm Grove Rd.  
 Elm Grove, WI 53122  
 Phone: (262) 786-5660  
 Fax: (262) 786-5620  
[theyarnhouse@tds.net](mailto:theyarnhouse@tds.net)

**Hours:**

Mon, Tues, Thurs, Fri: 10-4  
 Wed: 10-6 Sat: 10-3



### Newsletter Note

Submissions to our monthly newsletter are always welcome. The deadline for submitting articles is the 20<sup>th</sup> of each month.

Articles may be sent to:

Jayne Coster  
 397 Starling Lane  
 Madison WI 53704  
[jaynecoster@ameritech.net](mailto:jaynecoster@ameritech.net)



### KNITTING SAFARI 2008!

The 2008 Knitting Safari is heading south of the border to Chicago on Saturday, April 19! Join us for fun, excitement, and stash-enhancing opportunities as we tour Lorna Laces, and stop for a bit of shopping at

Arcadia Knitting and The Fold in Marengo. Of course we'll also be stopping for lunch – we wouldn't want you in a weakened state when entering yarn shops!

Sign up soon as space is limited and spots will be filled on a first come-first served basis. If there are more applicants than spaces, a waiting list will be formed in case of cancellations.

The cost of the Safari is \$45 for guild members and \$50 for non-members. Guild members may apply before March 15, 2008. After March 15, 2008, we will accept applications from non-members.

Applications will also be available at the registration table at our March MKG meeting on March 10. A detailed itinerary and more information for the day's events will be emailed or mailed after April 1, 2008.

If you have any questions about the 2008 Safari, please contact Kate Findley at kmfindley@wisc.edu or call her at 577-7028.

#### Knitting Safari 2008 Application

Name: \_\_\_\_\_

Email Address: \_\_\_\_\_

Address: \_\_\_\_\_

Phone number: \_\_\_\_\_

Best time to contact you: \_\_\_\_\_

Please check one:

Please mail the itinerary/any pertinent information to me.

Please email the itinerary/any pertinent information to me.

Please check one:

I am a member of the Madison Knitters' Guild.

I am not a member of the Madison Knitters' Guild.

Please mail this application, along with your check made payable to the Madison Knitters' Guild, to Kate Findley, 975 Bascom Mall, U.W. Law School, Room 4315E, Madison, WI 53706.

### 'Tis The Season

**A Christmas Store with a Yarn Corner**

7507 Hubbard Avenue  
Middleton, WI 53562  
(608) 836-3749

**Store Hours:**

Monday-Friday 10-5  
Saturday 10-2

'Tis always the season to be knitting!



## Lakeside Fibers

*More than just a yarn store!*

**Don't Forget - Inside LF:**

**The Washington Hotel Coffee Room!**

402 W. Lakeside St., Madison, WI

**Store Hours:**

Monday: 10-8

Tuesday: 10-6

Wednesday: 10-8

Thursday: 10-6

Friday: 10-5

Saturday: 10-5

Sunday: 11-3

## Sandy's Palette LLC

**Sandy Jones**

305 Maiden Street  
Mineral Point, WI 53565  
(608) 987-1346

sandy@sandyspalette.com

www.sandyspalette.com



**Hand Dyed Yarns & Roving for Knitters & Spinners**

Weaving  
Spinning  
Knitting  
Yarns  
Fibers  
Tools  
Books  
Lessons

## STUDIO S FIBRE ARTS

**S.J. Woods**

W8903 County Rd. A  
(Corner of 89 and A)  
Delavan, WI 53115-2451  
(608) 883-2123  
sjfiber@jvlnet.com

M, T, 1-5; Th, F, S, 10-3;

Closed Wed. and Sun.



## Classifieds

From the **YARN HOUSE**, Elm Grove: Videos and DVDs are a good investment. 10% off Meg and Lucy.

From **IRIS Fine Yarns** in Appleton: End of Winter Sale – March 12-15; 30 – 60% off large selection of clearance and discontinued yarns. 132 East Wisconsin Avenue, Appleton, WI; [www.irisfineyarns.com](http://www.irisfineyarns.com); [info@irisfineyarns.com](mailto:info@irisfineyarns.com) or 1-920-954-9001

From **Knitter's Treat** in Monticello: Space available in Lily Chin workshops on Tuesday March 11 - (Reversible Two-color Knitting)- all day class and Wednesday March 12 - (Alternative Closures) - morning class. Contact Ruth Sybers at [knitterstreat@wekz.net](mailto:knitterstreat@wekz.net) or 608-235-2835.

**Needles 'n Pins** **Doreen L. Marquart,**  
Owner



**W 9034 County A**  
**(Richmond)**  
**Delavan, WI 53117**  
**(608) 883-9922**

[www.needlesnpinsyarnshoppe.com](http://www.needlesnpinsyarnshoppe.com)

### Store Hours

Monday 9-8; Wednesday, Friday & Saturday, 9-5;  
Sunday, 1-5; Tuesday & Thursday, Closed

## 2007-2008 Board of Directors & Committee Chairs

President	Mary Jo Harris
Vice President	Connie Burmeister
Treasurer	Kathy Trudell
Secretary	Jane Newman
Historian	Elizabeth Prose
Knit Out Chair	Judy Pruski
Publicity	Gail Snowden
Director at Large	Janette Hermanson
Director at Large	Kay Moffat
Hospitality Chair	Susan Aehl
Librarian	Barb Armstrong
Community Projects Chair	Pat Berhardt
Newsletter Editor	Jayne Coster
Membership Chair	Carol Huber
Knit-Aid Chair	Robbie Preston
Knit-In Chair & Vendor Liaison	Karen Scammell
Advertising Chair	Marcia Stern
Website Chair	Ann Varda



## From Our Library...

In addition to our members, one of the greatest assets of the Guild is our Library. Over the years, a number of items have gone missing. Some have been checked out for so long that they are forgotten about or lost. Some have been checked out by guests at meetings and have never been returned. Some may have been intentionally stolen. Over time, it starts to make a dent in our inventory. With board approval, several new policies have been put into place.

1. We have always asked for a one month check out limit, and to be helpful, monthly reminders are now being made either by email or by phone.
  2. We are asking that you wear your name tag when checking items out of the library. With 370 members it is impossible to remember and recognize everyone. Your name tag insures that the library is only being used by members.
  3. We ask that any lost or damaged items be replaced.
- We hope for your understanding and cooperation as we are trying to preserve the Library so it may be used and enjoyed by members for many years to come.



**Knit, Relax, Be Inspired...**  
[www.riverboutique.com](http://www.riverboutique.com)

River Boutique  
350 Cottonwood  
Hartland, Wisconsin 53029

Fabulous Specialty Yarns, Women's Apparel and Art

## Getting to Know Our Members— Elisa Budde

**H**i, my name is Elisa Budde. My friends call me Elyse. I have been knitting for about eight years. I enjoy knitting, reading, watching movies, shopping and my family. I live in Beaver Dam, 30-35 minutes northeast of Madison. I have been married to my husband Bill for twenty-four years. He feeds my addiction to yarn. We have three children Leo 23, Jim 22, and Megan 19. We currently have two animals: Scruffy, a dark golden retriever and Whiskers my black and white cat.

Everyone in my family enjoys feeling my stash. My stash is stored into four bins and four baskets. The four baskets hold leftover yarn, current projects and projects to be worked on, at a future time. So when the need arises to begin a new project, I can just look in the basket and pick one or two things to work on. Did I mention that today I am down to just four projects, with two projects waiting to be worked on? They are just itching for me to look their way. Yes, my projects talk to me. Does that ever happen to you? I've completed my brown bag project. It felt good to step back and say, "Yep, my work is done here."

I can't wait for the Knit-In with Lily Chin. If you see me, please stop to talk with me because I love meeting fellow knitters and hearing about the current or past yarn tales, no pun intended. I also love to see the wonderful things all the knitters create and wear every time I go to the Monday meetings. It is always a hoot to know that I am at one with other knitters who "just get it" when we talk about yarn and projects.

Hopefully next month I will be sitting on my chair on my stone patio knitting and looking at beautiful Beaver



Elisa Budde pictured here with her family.

Dam Lake in 70-degree weather. One can always dream the good life; at least the knitting will not be a dream.

So remember relax, knit and create!

## Knitter's Treat

Monticello, WI 53570

**Ruth Knight Sybers**  
608-938-4607



Guest Designer Workshops  
Many Complete Pattern Lines  
Vivian Hoxbro Kits

Appointments and Inquiries at [knitterstreat@wekz.net](mailto:knitterstreat@wekz.net)



**Susan's  
Fiber  
Shop**

**N 250 Hwy. A, Columbus, WI 53925**

Phone: (920) 623-4237 Fax: (920) 623-0120  
Orders Only 888-603-4237

# Yarn

Monterey

1541 Bellevue St.  
Green Bay, WI 54311  
(920) 884-5258  
Fax (920) 884-5259  
[www.montereyyarn.org](http://www.montereyyarn.org)

*obsessive knitters reward:* every completed card entitles bearer to \$20.00 in free merchandise (classes & sale items excluded)



## MKG Calendar

March 8	Knit In 2007	9:00 a.m.	Speaker: Lily Chin Monona Community Center; Speaker: Lily Chin; Vendors: Bead Bin & Woodland Studios
March 10	MKG Meeting	7:00 p.m.	
April 14	MKG Meeting	7:00 p.m.	Monona Community Center; Speaker: Susanna Hansson; Vendors: Needles 'n Pins & The Yarn House Mark your calendar! Details to follow... Monona Community Center; Annual Appetizer & Dessert Buffet & Fashion Show
April 19	Knitting Safari		
May 12	MKG Meeting	7:00 p.m.	



## Other Fiber Events

March 9-12	Lily Chin in Monticello	Knitters Treat; Phone: 608-938-4607 or email knitterstreat@wekz.net; Openings available in each workshop
April 13-15	Susanna Hansson in Monticello	Knitters Treat; Phone: 608-938-4607 or email knitterstreat@wekz.net; One opening in Bohus workshop, two in short row workshop

Madison Knitters Guild

397 Starling Lane

Madison WI 53704