



ATTENTION MKG MEMBER!

Due to a schedule conflict at the Monona Community Center on September 8, our first meeting of the year will be held at the Bishop O'Connor Catholic Pastoral Center, 702 S. High Point Rd. in Madison. See you there!

Madison Knitters' Guild Knitters' Knews

Volume 29 Issue 1

September 2008



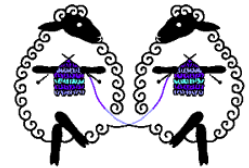
Slip Stitching with Amy Tyler on September 8

Welcome back knitters! Our meetings first speaker is a real renaissance woman with an expertise in slipping stitches. Slip stitches are terrific for creating amazing texture and blending colors, for creating complex-looking patterns in surprisingly simple ways, and for creating dramatic vertical and horizontal texture as well as thick and toasty knitted fabrics. Amy Tyler's presentation will cover three categories of slip stitches: stitch patterns that involve slipping stitches with movement of the working yarn to the front and back, "mosaic" stitches, and slipping stitches over more than one row or over more than one stitch. She will cover the effects of slip stitches as applied to stockinette stitch, garter stitch, seed stitch, and ribbing. She will discuss the application to yarns of solid colors, variegated yarns, and combining yarns of various colors and textures. She will also share some of her applications of slip stitches to knitted items.

Amy Tyler holds a fine arts degree in modern dance and graduate degrees in kinesiology and physiology. A fiber artist from Midland, Michigan, she has been knitting and designing for over 20 years, spinning for 10 years, and teaching for over 30 years. Amy's fiber arts work is heavily influenced by both her fine arts training and her science training. Common to both is an appreciation for composition, pattern recognition, and systematic exploration. Her fiber work has been published in *Spin-Off*, *Fiberline Magazine*, and *Knit Lit the Third*.

September's Venders

Off the Beaten Path
La Bella Vita



Upcoming Programs

October 13

Vivian Hoxbro

November 10

Jane Slicer Smith

December 9

Susan Anderson

From Our President—Kate Findley



Sunsets arrive earlier each day, school supplies are on sale, road construction is being completed (OK, maybe that's a bit of an exaggeration), and new wools are arriving in LYS – it all means that summer is beginning to wind down,

autumn is on the way, and we begin a new Knitting Guild Year.

Hello, Knitters! Welcome to our new members and welcome back to our returning members! We've got an exciting year planned. First, we have a great lineup of speakers for our meetings and the Knit In. Second (through Seventh), in addition to the monthly meetings, we have many activities planned – Knit Out at the Farmer's Market, the Knitting Retreat, a trip to the Bohus Stickning exhibit at the American Swedish Institute in

Minneapolis, the Knit-In, the Knitting Safari, and a bus to Stitches Midwest, 2009.

The first of these activities will be the Guild's Knit Out at the Madison Farmer's Market on Saturday, September 20. Please come and join us as we knit "off the square" this year at a booth set up on Martin Luther King, Jr. Blvd. You don't have to sign up for a specific time – just come on down anytime between 9 a.m. and 1 p.m. and join your fellow knitters at the Farmer's Market.

Your Guild has many volunteer opportunities – no matter how much time you can commit. Contact me for more information if you'd like to volunteer.

This is your Guild, and it can't improve without your help. With over 400 members, we are a knitting "think tank," and we welcome your comments and thoughts.

Knit On!

– Kate Findley

Meeting Minutes—May 12, 2008

ATTENDANCE: 180

There were no vendors at this meeting. Members brought yarn that they wished to sell. The library was selling books and pamphlets that were not being utilized by the membership and thus were being removed from the library.

President Mary Jo Harris opened the meeting at 6:30 p.m. This was the final meeting before summer which featured our annual Spring Potluck. The meal preceded the business portion of the meeting.

Mary Jo announced that baby hats for the Edgewood Guatemala project can be given to her during the next week, and she will get them to the appropriate person at Edgewood.

MITTEN PROJECT: Mary Jo has been contacted by a group from Midvale Elementary School regarding their project "Knittin' a Mitten for Midvale." The goal is to provide 200 pairs of mittens for the 2008-2009 school year for students in need. Midvale Elementary is a K-2 campus so they are making small mittens. They are meeting May 29 from 6:30-8:30 p.m. to knit. Yarn and a beginner level pattern will be provided. If you want to participate but can't be there that night, please contact Jennifer Wang at 236-0495 or Angie Morgan at 231-9704 for more information.

ELECTION: Connie Burmeister moved to approve the three nominees for the three open Board positions. The motion was seconded and unanimously approved. The new Board members are: Kathy Digman, Kate Findley, and Joan Deneen.

ANNOUNCEMENTS: Mary Jo announced the new members that were present and acknowledged the large number of guests that were in attendance. She stated that guests are welcome to one meeting and then will be asked to join if they wish to continue attending meetings.

It was also announced by Mary Jo that Pat Bernhardt will not be Community Projects Chairperson in the future. The Guild will honor her at a fall meeting when she can be in attendance.

COMMUNITY CHALLENGE: There was a drawing for people who donated items this meeting. The total number of items for this year's Knitting Challenge was 650—far exceeding the 500-item goal.

The **BROWN BAG EXCHANGE** followed. A variety of completed items from the bags of assorted yarn that

were exchanged in the fall were returned to their owners. This year's theme was "Creative Carryalls" and a lot of creativity was in evidence when the articles were displayed to the owner and the members in attendance.

A STYLE SHOW followed a short break for perusing the yarns for sale.

Members participating in the Style Show were:

Muriel La Rose	Judy Pruski
Andrea Diss-Torrance	Gail Snowden
Barb Armstrong	Mary Paulson
Al Menninga	Allison Jarvis
Leanne Menninga	

Judy Pruski told about a new TV show, *Knitting Daily TV*, that is to be on PBS in the future. She knit a pattern called the Modern Quilt Wrap which she showed tonight that will be featured on one of the shows. The number to call for the local PBS station to request that they carry the show in our area is 263-2121.

DOOR PRIZES followed.

Thanks to Susan Aehl and Kay Moffat who were responsible for organizing and setting up for our Spring Potluck. The table decorations were very pretty and spring-like which is something we all appreciated after our long winter.

Respectively submitted by Jane Newman

"Knitting is a boon for those of us who are easily bored. I take my knitting everywhere to take the edge off of moments that would otherwise drive me stark raving mad."



~Stephanie Pearl-McPhee

Knitter's Treat
Monticello, WI 53570

Ruth Knight Sybers
608-938-4607



Guest Designer Workshops
Many Complete Pattern Lines
Vivian Hoxbro Kits

Appointments and Inquiries at knitterstreat@wekz.net



Annual MKG Knitting Retreat Weekend

Mark your calendars now— January 30, 31 and February 1, 2009— for our annual MKG retreat which will be held at the Chalet Landhaus in New Glarus. A block of rooms will be reserved. Members are welcome to come for the weekend or come on Saturday. We had a GREAT time last year!

The Knitting Room
 74 S. Main Street, Suite 101
 Fond du Lac, WI 54935
 920.906.4800
 theknittingroom@charterinternet.net
 Monday Closed
 Tuesday 10-9
 Wed & Thurs 10-5

Kristin Johnson theknittingroomwi.com Beth Mannebach

MKG Bylaws Change

Over the summer, a Board-appointed committee met to review the “Bylaws of the Madison Knitters’ Guild, Inc.” They presented their proposed changes to the Board on June 17, 2008, which the Board approved on that date. While the majority of changes were clarifications of what was originally written, one change was made that may affect some MKG members. The changed section is below with the changed wording in bold.

ARTICLE XI

SECTION 1. Annual Dues. The Board of Directors may determine from time to time the amount of initiation fee, if any, and annual dues payable to the corporation by members of each class.

SECTION 2. Payment of dues. Dues shall be payable in advance of the first day of October in each fiscal year. Dues of a new **in-state** member paid after February 1st shall be in an amount which is half of the annual dues set in accordance with Section 1 of this article and shall constitute dues for the remainder of the fiscal year.

Dues for new out-of-state members shall remain as set by the Board of Directors throughout the fiscal year.

Explanation and Comments – The old Bylaws stated that “dues of a new member paid after the February meeting shall constitute dues for the remainder of that fiscal year and for the next fiscal year.” Because of this wording, the Board of Directors has had problems at times identifying exactly how many paid members belong to the Guild. Each year too, some members were confused about whether they needed to pay dues in the fall and duplicated their dues payment.

The above change was made in an effort to make things easier for everyone. Rest assured that if you are a new member living in Wisconsin and just paid your dues this past Spring or Summer, you are still a paid-up member for the 2008 – 2009 guild year and do not need to pay dues this fall. This change will however, affect individuals living in Wisconsin that join after February 1, 2009.

A full copy of the latest set of Bylaws is available for review in the library. Please contact Mary Jo Harris if you’d like a personal copy.

‘Tis The Season
A Christmas Store with a Yarn Corner
 7507 Hubbard Avenue
 Middleton, WI 53562
 (608) 836-3749
Store Hours:
 Monday-Friday 10-5
 Saturday 10-2

Prairie Junction Yarn and Needlework
 LLC 227 EAST MAIN
 SUN PRAIRIE, WI 53590
 (608) 837-8909

M-F 10-5
 Sat 10-4

Sue Alstad

“The innocent sleep,
 Sleep that knits up the ravelled sleeve of care...”
 ~William Shakespeare

Summer 2008 Stitch 'n Pitch Event



Deb Jacobs and Alisa Neumeier

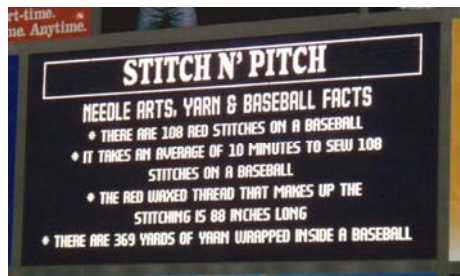
Attending the second annual Milwaukee Brewers Stitch N' Pitch on July 9, 2008, has been a highlight of my summer. It was wonderful to be at a Brewers game as part of a special group and share our passion. This is an event that other knitters should experience. I always take knitting along when attending just about any event, especially sporting events, but this was quite different as I was not going to be the only knitter. I usually get some strange looks as I am knitting and feel out of place, but this time I was with my people.

We arrived and spent a little time tailgating before making our way into Miller Park. The Stitch N' Pitch tickets were discounted from \$26 to \$22 each. Not only did we get great seats on the Loge Level, the promotion included a special edition Milwaukee Brewers Stitch N' Pitch baseball hat! When presenting our tickets for the hats, we discovered Miller Park was providing a skein of yarn for the attendees to create a knitted or crocheted 10"x10" square in the pattern of their choice.

Volunteers will be assembling the squares into afghans to be auctioned off with proceeds benefiting Brewers Charities, Inc. We also received a beautiful Louisa Harding pattern book; we all need more patterns, right?

Sadly, the Brewers did not have a good night and lost 3-8 to the Colorado Rockies. On the upside, we had perfect weather for knitting, baseball, and the sausage race. This was a lovely event that I look forward to attending again in 2009 (hopefully the Brewers will win next time).

—Alisa Neumeier



Summer Veggie Salad

A nice alternative to your basic lettuce salad, this salad has many variations, but this is what I do, in a nutshell.

Throw together a basic vinaigrette:

150 ml vegetable oil (I use canola—it's lighter than olive oil, and I like it with the summer veggies)

3 Tbls balsamic vinegar

Ground pepper to taste

Shake it up and save it until you need it.

The salad part—this is where the versatility comes in:

I always use green pepper, tomato, and cucumber. Chop them up in the size of pieces that you like eating. I tend to use one whole one of each. Use your own judgement when it comes to the amount you need. You can always make more vinaigrette.


I have also used broccoli, spinach, snap peas, and carrots (grated). Asparagus would surely be good. Use what you like eating raw.

Stir up the chopped veggies with the vinaigrette and toss on some cheese. Again, I usually use feta because I love feta. But some fresh grated parmesan is good, too.

I have used the extra for next-day lunches in a pita, and it is still good.

—Gretchen McClain





Stitcher's Crossing

Great selection of yarn & needles
Year 'round classes
and...
Quilting & Cross Stitch supplies

M-F 9:30-6:00
Thu until 8:30
Sat 9:30-5:00
Sun 12:00-4:00

608.232.1500
info@stitcherscrossing.com
6122 Mineral Point Road
Madison, WI 53705

"A #6 aluminum needle has been known to furnish an excellent emergency shearpin for an outboard motor."



~Elizabeth Zimmerman



STITCHES 2008: Shopping for Yarn: The Next Olympic Sport

The decision to organize this year's bus trip was purely selfish... what better way to get to know more guild members? Little did I know that there would be so many additional benefits!

Keeping a list of who planned to attend and making sure that everything was in order for the 8:00 a.m. departure was a cinch. Great advice from last year's coordinator, a step-by-step to-do list, and newly elected enthusiastic officers ready to assist with the details made the planning very uneventful.

What I learned -- in addition to the names that go with many familiar faces -- was that knitters are indeed dependable and thoughtful. Arriving to the bus stop at what I thought was an ample 20 minutes early, I discovered that there was no need to worry that our departure might be delayed. Nearly a third of our group had already arrived into choice seats with needles and yarn settled into their laps!

The air was abuzz with fiber argot, and you could sense the excitement. An anxiously awaited event was about to begin! You could tell the first-timers by their hesitant movements, and seasoned Stitches goers eased their concerns as they shared tips for maneuvering the course that would be before them in less than two hours.

"Your first year, just take it all in... stop at as many booths as you can, then next year take a class or two."

"I read through the show book and highlight the vendors I know I want to see first."

"Compare prices on books you want to buy, and check to see if the author will be there to autograph it."

Like athletes preparing for the big event, there was an aura of camaraderie, but also a sense that there would be victory for all who came to this event.

As we departed Madison, you could hear the conversation slowly dim and become replaced by the sound of softly clicking needles: knitters dedicated to getting the most from an entire day devoted to their passion.

From the first stop at the "Xtreme Stash Wall" in the foyer (a look, touch and take sampling of over 50 new yarns!) to the frenzy at the \$3-each-bins, there was plenty of satisfaction to go around, no matter what each knitter's individual goal might have been.

"I intend to fill it up!" declared MaryJo Harris, with a past president's assuredness, as she rolled her suitcase into the exhibition hall.

"Oh, my!" gasped newcomer Edith Hoffman as her jaw

opened wide, "I've never seen so much yarn!" later confiding to her peers that she would have loved to have one of each!

My personal shopping mission was to efficiently navigate the aisles in search of vendors I most sought after, allowing myself only a quick glimpse into the multitude of displays in between each. I wrote the booth numbers on the front of my program in alphabetical order, confident that my game plan would assure me success in this shopping marathon. One by one, I crossed out the numbers as my tote bag began to bulge and my tummy began to rumble. "I can't stop for lunch just yet," I thought. "Maybe right after the Kumihimo demonstration."

Little did I know that the short presentation would only serve to entice me toward an unplanned stop at the booth to purchase -- of course! -- the kit and supplies for making deliciously elegant Kumihimo purse straps and beaded bracelets. This diversion took me off course only temporarily. I looked around to survey my progress and realized that -- yikes! -- I was only halfway through the course, but three quarters of the time had passed!

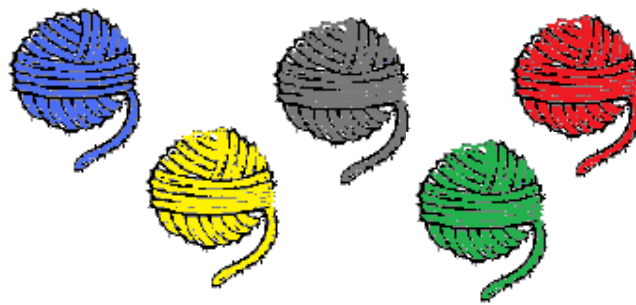
Making an expert move to devour my pre-packed lunch while watching the free fashion show, I smugly settled into multitasking mode, knowing that we knitters are sooo good at this sort of thing. We can, after all knit and listen at the same time (as we so patiently explain to the less informed).

As we headed into the home stretch, I spied Webs -- the Emerald City of yarn outposts -- advertising the best prices to be found. Who needs a medal when you can accept a fabulous deal on yarn as your prize for a race well run?

I will admit to nodding off in a snooze as we motored back to Madison. Who would have thought that shopping for yarn (and a few must-have gadgets, patterns and notions) could be so physically and emotionally exhausting?

Next year... I'm going for the gold. Maybe then I can justify over \$300 for a tiny ball of Quivit or yarn from Peruvian camels!

—Nancy McCulley



Ravelry—The New Age Knitting Group



In the early summer of 2007, my sister started raving about Ravelry in her phone calls to me and urging me to join. I put my name on the waiting list and after about two months, I was in. A whole new knitting world opened up.

What is Ravelry? Ravelry is a social networking site for knitters with 161,537 registered members as of August 6, 2008. But that is only the beginning. The site has several sections. Each knitter has a Notebook where projects are listed. You add in all your details about the project: pattern, yarn, needles, etc. You can add pictures of your knitting and notes. There are spaces in the Notebook section for your stash inventory both yarn and needles; a library section where you can list all your knitting books; a friends section where you can see what all your friends are doing; a queue section where you can add projects that you are thinking about knitting; a favorites section where you can link other peoples' projects that you like or that inspire you; a message section for sending emails; and a blog section where theoretically Ravelry will link to your blog if you have one (although I can't seem to get it to work with my Livejournal knitting blog).

Then there is the rest of Ravelry. You can spend hours and hours exploring these other sections. In the Patterns section, you can browse for patterns by tags, pattern type, designer, gauge, designer or difficulty. You can see how other people have made up the pattern and what they used. You can even download some patterns as a PDF—both free and paid. There is a Yarns section where you can search by fiber content, gauge, producer/ dyer or popularity. If you're not sure what to do with a yarn in your stash, you can see what other knitters have made with that yarn.

The Forums are a whole other area to get lost in. There are 232 pages (and counting) of groups that you can join and follow in the forums. Just about any area of interest has a group dedicated to it, and if you can't find one for your particular interest, you can start your own group. You can join knitalongs or get advice on any knitting question (or other questions). You can ask for that needed extra skein of yarn to complete a project or sell your unwanted stash. You can also become a designer on Ravelry, adding in your own patterns to be downloaded as PDFs. I have three free patterns so far that I have listed on the site.

Where is Ravelry? The website is: <<http://www.ravelry.com>>. According to the login page, it takes about two days to receive your invitation to join. There is lots of information on how to use the site with a community-edited guide and beginner's tours so you don't have to be afraid to jump in.

Come join in on all the fun! I'm Zbyszokknits on Ravelry.
—Judy Pruski



Tanks a Lot!

Come summer, it's a miracle that any of my clothes survive with their sleeves on. I have been known to cut sleeves off just about anything—that's why knitting tanks is such a good thing. It really allows me to have some shirts left come fall when a person really does like having sleeves again.

About five years ago, or so, I knit my first tank. I don't really remember even what it was. All I know now is that I can't resist a good tank pattern. I think I have literally a thousand shell patterns—every gauge, every neck line, every length. Even now after having collected so many, I still can't resist a shell in a magazine where a shell pattern exists. I browse through, say, an issue of *Knit 'n Style* disliking all the patterns; then a shell will be hidden under some ugly cardigan—I'm sunk.

Try this: knit a winter vest in a cotton and wear it in the summer. And inversely, I felt like a genius when I had knitted a cotton shell and wore it as a vest in the winter. They are versatile little numbers, and you are done before you get to the sleeves! That's my favorite part: no sleeves! That also means for those who do not like sewing pieces together, there is less to sew. Less yarn means less expense. Thus, I can justify buying yarn for a tank more easily than I can justify it for a sleeved sweater.

Another good thing about knitting tanks is that they go fast. I don't consider myself a fast knitter—persistent, yes; fast, no. But I have completed tanks in under a week. Get a good pattern with a big gauge, like the "Fitted Tank" pattern from Blue Sky, and less than a week later, you've got yourself a new shell.

The temptation is that every time I knit a tank, I right away want to knit five in every color. Beware of wanting to buy yarn for five tanks instead of for one. It adds up fast. Here's a good web address that helps with gauge as well as with tanks. It's from KnitPicks, and I know we have Knit-Pick fans in the group:

<http://www.knitpicks.com/kpimages/pdf/50384221.pdf>

Happy sleeveless knitting!

—Gretchen McClain

We stock a wonderful variety of yarns, threads, books, notions, needles & patterns.



**Pine
Needles**

www.pineneedlesyarn.com

Your Northern Yarn Shop
42790 Hwy 63
Cable, WI 54821
715-798-5004
pineneedles@cheqnet.net
Joan Correll – Owner

1 mile South of Cable on Hwy 63 across
from the Firefly Trading Company Store

*Instruction Classes
Available*

Rib Shell Tank Pattern, designed by Linda McKie

This pattern starts in a double-rib which tapers equally on both sides into stocking stitch.

Finished Bust size: 37 inches

Yarn used : 6 balls Rowan All Seasons Cotton

Needles: 1pair 7UK

Gauge: 19sts by 29 rows

Back

C.O. 86sts

Row 1: *P2, K2 repeat from * to end. The row will finish on a P2

Row 2: *K2, P2 repeat from * to end. The row will finish on a K2

These 2 rows form the double rib pattern.

Work 44 rows ending in a WS row.

Then change from double rib to stocking stitch is achieved by making the first 2 purl stitches and the last 2 purl stitches on each RS row into knit stitches.

Next row: K4 *P2, K2 repeat from * to last 2 stitches K2

Next row (ws): Knit and purl every stitch as set on the previous row

Next row: K8 *P2, K2 repeat from * to last 6 stitches K to end

Next row (ws): Knit and purl every stitch as set on the previous row

Continue changing the first and last 2 purl stitches on each RS into knit stitches until you are knitting all the stitches on the RS and purling all the stitches on the WS.

Work in stocking stitch until back measures 12 inches (or desired length).

Armhole shaping

Cast off 5 sts at the beginning of the next 2 rows.

Cast off 2 sts at the beginning of the next 4 rows.

Dec 1 st at each end on every RS row until 62sts remain.

Continue straight until armhole measures 8 inches.

Shoulder and back neck shaping

Cast off 5 sts at the beg of next 2 rows.

Cast off 5 sts and knit until there are 9 sts on the right needle and turn leaving rem stitches on a holder.

Work each side of the neck separately.

Cast off 4 sts at beg of next row.

Cast off rem 5 sts.

With RS facing, rejoin yarn to rem sts cast off centre 24 sts knit to end.

Work to match first side reversing shaping.

Front

Work as back until 18 rows less have been worked on the armhole to the start of the shoulder shaping.

Neck shaping

K23 and turn leaving rem sts on a holder.

Dec 1 st at neck edge on next 4 rows then on the next 4 alt rows leaving 15 sts..

Work 5 rows, ending with a WS row.

Shoulder shaping

Cast off 5 sts at the beg of next and following 2 alt row.

With RS facing slip centre 16 sts onto a holder and rejoin yarn to rem sts knit to end.

Work to match the first side reversing shapings.

Making Up

Join right shoulder seam and with right side facing pick up and knit 92sts all round and using the double-rib stitch work 19 rows.

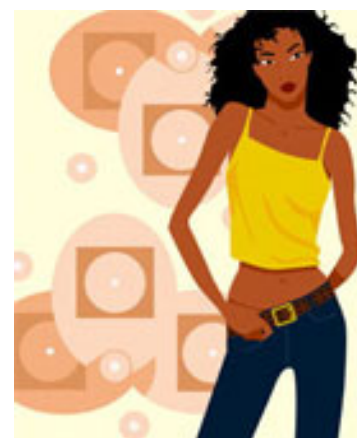
Cast off.

Join left shoulder and neckband seam.

Fold neck band in half and slip stitch to the inside.

Pick up and knit 92 sts around armhole edge. Knit one row and then cast off.

Join side seams, block and wear!



Community Projects Update

There are many organizations and individuals in our community that could benefit from our knitting skills. Items such as preemie hats, general baby items including hats, sweaters, blankets and booties, chemo hats and cold weather gear (hats, scarves, mittens/gloves, and sweaters) for children and adults are all needed by someone in our area. These articles should be knit from clean, SOFT, machine washable yarn which generally means the acrylic and acrylic blend yarns.

For those Guild members that only knit with wool yarn but would like to contribute to a charity project, there are several organizations that accept knitted wool items. In our immediate area, HospiceCare has a comfort shawl program that accepts long, rectangular shawls in any fiber. Operation Helmetliner requests 100% wool helmetliners for our soldiers serving in cold climates. For more information about the program, a pattern, and address to send completed project, check out their website:

<www.geocities.com/helmetliner>. Another organization seeking woolen items is Afghans for Afghans. Their website with information about the project, guidelines for knitted items, and mailing information is: <www.afghansforafghans.org>.

As autumn approaches and we start to think about knitting our own cold weather projects, there is not always time to also do community knitting. Donations of non-perishable food items, toothbrushes, bars of soap, hotel "freebie" toiletries are always welcome and don't conflict with personal knitting time.

As the year goes on, I will try to gather and pass on information regarding what specific organizations would find especially useful. There will be some yarn available at the September meeting that can be used for knitting community projects.

— Jane Newman

8th Annual Brown Bag Exchange



This year's Brown Bag Exchange Theme will be **Cold Hands Warm Feet**. If you would like to participate, pick out some yarn from your stash and bring it along to the October 13 Guild meeting.

Include a tracing of your hands and feet so that the knitter will know what size to make. If the yarn has lost its label, make a note of the weight and fiber content. Put the annotated skein(s) in a paper bag. Do not write your name on the bag. A table will be set up at the meeting where you can turn in your bag which will be assigned a number. That number and your name will be put on a list. During the meeting break, after all the bags have been turned in and marked, come back to the table and pick up a bag, making sure your name and the bag number you take is put down on another list. At the May 2009 meeting, bring back the bag with the completed project. We hope you enjoy participating in this event!



"Knittin' A Mitten for Midvale" Project

The Midvale-Lincoln PTA has set a goal to supply Midvale Elementary School with 200 or more pairs of mittens for the winter season of the 2008-2009 school year to be distributed by school staff to students in need. While they've set 200 mittens as a goal, they'd really like to be able to provide a pair of mittens to every student which would bring the number to about 350 pairs of mittens!

Midvale is a Kindergarten through Second grade school so small mittens are needed. Please contact Jane Newman if you'd like some yarn to use for the mittens. Completed mittens can be dropped off at our September 8, 2008, MKG meeting. Or they can be delivered to the person below after September 2, 2008.

Cindy Terrill
Midvale Elementary School
502 Caromar Drive
Madison, WI 53711
Phone: 608-204-6700

For more information about the project please contact Jennifer Wang at 236-0495, jlwang42@gmail.com or Angie Morgan at 231-9704, uplandmo@merr.com.



Annual MKG Knit Out

It's time again for the nation to celebrate our craft with the **National Knit Out**. Started several years ago by the Craft Yarn Council of America, enthusiastic knitters across the country have banded together in late September in their communities to knit in public. This is a great way to celebrate the coming of autumn with knitting, coffee, apple cider, and some sweet treats from the Farmers' Market. Bring your current project and a chair. If you are a spinner and would be willing to cart your wheel along, please do so. In the past, this has been a friendly event enjoyed by both members of the Guild and onlookers.

This year's Knit Out is scheduled for Saturday, **September 20, 9:00 a.m. — 1:00 p.m.** We will gather on Martin Luther King Boulevard as part of the Food for Thought event. Food for Thought is Madison's annual, fun, festive forum that explores and celebrates the diversity of good food available in Wisconsin. Come and share your love for the craft with the general public!

Getting to Know Our Members— Trudi DeLain



I moved to Madison soon after graduating from high school in Sheboygan Falls in 1977. Growing up in a small town of 35,000 people is quite different than living in Madison. I've really enjoyed all that Madison has had to offer these past 31 years, from the great outdoor music, the lakes, the biking, and the people. I am a great lover of the outdoors, having grown up in a family that traveled north to a cottage in

the summer where we enjoyed fishing, hiking, and hanging out. Then I met my husband, who introduced me to bicycle touring and cross-country skiing, and that is something we continue to do together and as a family.

But then I received a gift from a dear friend of mine, a pair of felted mittens, and that has changed my life forever. I want to say it's been at least five years now. I was so touched by them and wanted to learn how to knit and give others hand-knitted gifts. I haven't put my down needles since.

From the beginning, I have knitted mittens to felt and scarves and hats. I have taken classes on how to knit socks, the Baby Surprise Sweater, tanks, and sweaters. I truly am an addicted knitter who isn't happy unless I have at least two or three projects on my needles.

My job has taken me around the state, and I always include a stop at a local knitting shop, from Fond du Lac, to Janesville and Delavan, to Richland Center and Spring Green, Mineral Point, Washington Island, each shop unique in its own way.

Knitting has brought me great satisfaction in completing beautiful projects that I and others love. It has introduced me to fellow knitters who have become great friends. We have become a very close-knit group.

Happy Knitting everyone!

WOODLAND STUDIOS
 Open 7 Days in Historic Stoughton
 195 E. Main Street
 (608) 877-8007
 www.woodland-studios.com
 Join Us Every Wed Night For
 Open Knitting!
 Fine Specialty Yarns & Classes

**10% OFF
 To Guild
 Members
 Always!**

Sandy's Palette LLC

Sandy Jones
 305 Maiden Street
 Mineral Point, WI 53565
 (608) 987-1346
 sandy@sandyspalette.com
 www.sandyspalette.com

Hand Dyed Yarns & Roving for Knitters & Spinners

Needles 'n Pins Yarn Shoppe
 Doreen L. Marquart, Owner
 W9034 County A (Richmond) Delavan, WI 53115

Hours:
 Mon, Wed, Fri & Sat 9:00a.m. - 5:00p.m.
 Sun 1:00 - 5:00p.m. (Closed Tues & Thurs)

Phone: 608/883-9922
 www.needlesnpinsyarnshoppe.com

The Dragonfly Yarn Shop

Kerri A. Shank, Owner
 1327 N. Wright Rd. Ste. 5A
 Janesville, WI 53546
 (608) 757-9228
 www.dragonflyyarnshop.com

Store Hours:
 Mon-Fri 10 to 5
 Sat 10 to 4
 Sun 12 to 4
 Closed Tues

Fine Wool, Luxury
 Fibers, Addi Turbo,
 Crystal Palace
 Classes

2008-2009 Board of Directors & Committee Chairs

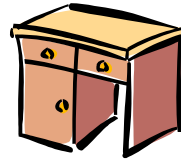
President	Kate Findley
Vice President	Connie Burmeister
Co-Treasurer	Kathy Trudell
Co-Treasurer	Kathy Digman
Secretary/Retreat Chair	Kay Moffat
Historian	Elizabeth Prose
Director at Large	Joan Deneen
Community Projects Chair	Jane Newman
Hospitality Chair	Susan Aehl
Knit-Aid Chair	Robbie Preston
Knit Aid Co-Chair/Knit Out Chair	Judy Pruski
Librarians	Barb Armstrong/Karen Scammell
Membership/Advertising Chair	Marcia Stern/Mary Jo Harris
Newsletter Editor	Jayne Coster
Publicity/Web Site Chair	Gail Snowden

Newsletter Submissions

Do you have an idea for an article in our monthly newsletter? Submissions are always welcome. The deadline for submitting articles is the 20th of each month. Articles may be sent to:

Jayne Coster
 397 Starling Lane
 Madison WI 53704
 jaynecoster@ameritech.net

The Knit Aid Desk is Open!



Just can't figure out what the pattern is trying to tell you to do? Can't remember how to make that certain stitch? Can't figure out what you did, but it sure doesn't look right? **NEED HELP?**

The **Knit Aid Desk** will be open once again this year. Beginning at 6:00 p.m., prior to our monthly meetings, a knit aid desk will be set up in our meeting room at the Monona Community Center. Each month, two members of our guild will be available as "Knitting Doctors" to staff the table for those of us who need help with a project. If you are interested in staffing the help desk, please contact Robbie Preston or Judy Pruski.



Classified Ads

- ◆ Storewide Sale at **Prairie Junction LLC**, runs Sept. 8 through Sept. 20, with 20-50% off. Includes yarn, needles, patterns, cross-stitch, and punch needle supplies.
- ◆ **34 Addi Turbo Circular Needles**. Most sizes and many different lengths. Excellent condition. Please contact Barb Dykman at 608-798-2982, email – <pjdykman@chorus.net>
- ◆ **Harrisville T 36" Weaving loom**. Beautiful maple hardwood. Castle height: 42", unfolded: 42" x 32", folded: 42" x 13". It weighs about 70 pounds, Warping Board included. Call (608) 877-8007 - \$500.00
- ◆ **Spinning Wheels - Antique 30" spinning wheel**. Needs a drive band, otherwise it looks & works beautifully. Also, Antique 24" spinning wheel. Needs a drive band and flyer also looks & works beautifully. Call (608) 877-8007 - \$150.00 Each

Fiddlehead Yarns

7511-26th Ave Kenosha, WI 53143

262.925.6487

www.fiddleheadyarns.com

fiddleheadyarns@wi.rr.com

Tuesday, Wednesday, Friday 10-6
 Thursday 12-6
 Saturday 10-4
 Closed Sunday and Monday



Blackberry Ridge Woolen Mill, LLC

Wonderfully Soft Yarns from our Mill
 Featuring our own patterns, kits and yarns

3776 Forshaug Road Mt. Horeb, WI 53572
 (608) 437-3762

Visit our web site at:
www.blackberry-ridge.com

We are a working mill and our shop is open by appointment only, please call ahead.

2008-2009 Madison Knitters Guild Membership Form

Annual dues are \$20.00 for Wisconsin residents and \$15.00 for non-Wisconsin residents. This fee includes a subscription to the Knitters' Knews. Forms and checks can be mailed to Kathy Digman, 5022 Starker Avenue, Madison, WI 53716

PLEASE MAKE CHECKS PAYABLE TO MADISON KNITTERS' GUILD

PLEASE PRINT OR WRITE CLEARLY

NEW MEMBER _____ RENEWING MEMBER _____ AMOUNT PAID _____

NAME: _____

STREET ADDRESS: _____

CITY: _____ STATE: _____ ZIP: _____

TELEPHONE: (____) _____ EMAIL: _____

WEBSITE or BLOG ADDRESS: _____

PLEASE DO NOT INCLUDE MY MEMBERSHIP INFORMATION IN THE MEMBER ROSTER _____

TODAY'S DATE _____

*

COMMITTEE PREFERENCES

Please indicate which committee(s) you are interested in serving on during the 2008-2009 Madison Knitters Guild year.

___ Advertising & Publicity

___ Knit-In

___ Community Projects

___ Library

___ Facilities

___ Newsletter

___ Hospitality/Membership

___ Special Events



MKG Calendar

Sept. 8	MKG Meeting	7:00 p.m.	Monona Community Center; Vendors: Off the Beaten Path & la bella vita
Sept. 16	MKG Board Meeting*	6:30 p.m.	Whole Foods Class Room
Sept. 20	Annual MKG Knit Out	9:00 a.m. –1:00 p.m.	Capitol Square/MLK Blvd.
Oct. 13	MKG Meeting	7:00 p.m.	Monona Community Center; Vendors: Dragonfly & The Knitting Room
Oct. 21	MKG Board Meeting	6:30 p.m.	Whole Foods Class Room
Nov. 10	MKG Meeting	7:00 p.m.	Monona Community Center; Vendors: The Black Sheep & Sutters Gold 'n Fleece
Nov. 18	MKG Board Meeting	6:30 p.m.	Whole Foods Class Room

* All board meetings are listed here in the calendar because all members are invited to attend.



Other Fiber Events

Wisconsin Sheep and Wool Festival Jefferson County Fair Grounds, Jefferson, September 5-7.

Vivian Hoxbro workshops in Monticello, October 14 & 15. Email <knitterstreat@wekz> or phone 608-235-2835. (A few spaces left in each class.)

Jane Slicer-Smith workshops in Monticello, November 9 -12. Email <knitterstreat@wekz> or phone 608-235-2835.

Bohus Exhibit at the American-Swedish Institute in Minneapolis, January 12 - March 29, 2009. For those inclined to travel, you may want to visit this web site which lists many other festivals across the country and internationally <http://www.knittersreview.com/upcoming_events.asp#jul>.

Janet Szabo workshops in Monticello, February 2-4, 2009. Email <knitterstreat@wekz> or phone 608-235-2835.

Susanna Hansson workshops in Monticello, September 21-24, 2009. Email <knitterstreat@wekz> or phone 608-235-2835.

Madison Knitters Guild

397 Starling Lane

Madison WI 53704