



# Knitters' Knews

Volume 30 Issue 1

September 2009



## September 14—Cat Bordhi

Cat Bordhi's mission, according to Stephanie Pearl McPhee, "is to make you a more creative, free-thinking knitter who problem-solves and experiments with vigor and fearlessness. The best part? She can." Cat teaches and inspires more than a 1,000 knitters a year in her classes and retreats all over North America.

At our September 14 meeting, Cat will be describing the evolution of sock knitting throughout history and revealing how sock knitting contributes a surprisingly large proportion of new knitting techniques to knitting in general - thus benefiting those knitters who have no particular interest in socks. Her presentation will blend humor, history, insights, anecdotes, and plenty of knitting information.

Cat's Youtube knitting tutorials reach many 1,000's more, and her innovative books, *Socks Soar on Two Circular Needles*, *A Treasury of Magical Knitting*, *A Second Treasury of Magical Knitting*, and *New Pathways For Sock Knitters* have reached well over 100,000 knitters. Coming next: *Personal Footprints for Insouciant Sock Knitters* (fall 2009). Visit Cat's website at <http://www.catbordhi.com/>.

NOTE: The September 14 meeting is limited to members only.

## From Our President—Kate Findley

To our new members – welcome! To our returning members – welcome back! We hope you had a wonderful summer. Your Knitters' Guild Board has been busy over summer planning for this new guild "year" and beyond.

But before I tell you what's new, I'd like to address a rumor brought to my attention over the summer regarding our move to the new location for our monthly meetings. I want to be very clear – our move was not due to a competition between those members living in one part of town versus another part of town. The fact that the Guild has been meeting in Monona for many years has nothing to do with the fact that the new location is now on the west side of town. The Guild had no other option but to move the meeting location. While the Monona Community Center met our needs for many years, we had not only outgrown the facilities, but had outgrown them to the point that we had serious potential liability issues.

Our main concern in finding a new location was NOT which part of town it was in. Our priorities were: meeting area/room size; reasonable rental cost; handicap accessibility;

adequate parking; and storage area for the library.

Over the summer, some of the projects that kept your Board and various committees busy were planning for the new location and upcoming events, revamping our guild brochure and insuring the contents of our library.

**POLICY CHANGE** – Your Board is considering changing the Guild's policy regarding guests at our monthly meetings. Currently, our policy is to welcome guests, at no charge, to one meeting. After that, we ask that they join the Guild if they would like to continue attending meetings. Based on what other guilds are doing, it has been suggested that we change our policy and simply charge a nominal fee to any non-members/guests who attend a monthly meeting. Your Board would like to hear what you think about this suggestion. Please email the Board at [info@madisonknittersguild.org](mailto:info@madisonknittersguild.org) or speak with any Board member at our September meeting.

**UPCOMING EVENTS** – It's not too late to sign up for the bus to Stitches Midwest on Saturday, September 12. Our speaker for

## September Vendors

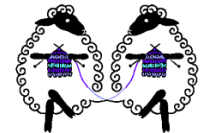
Gold 'n Fleece  
Ronda Statz

## Meeting Time

7:00 pm

## New Location!

West Side Club



## Inside this issue:

Meet Our Vendors	2
UFO Retreat	3
2008-09 Fiscal Year Data	3
Annual Knit Out	4
Brown Bag Exchange	4
Book Review	5
Every Snowflake is Different Knitalong	6
Getting to Know Our Members	8
Membership Form	9
Community Projects	10

continued on page 3...

## Meet Our Vendors



### Sutter's Gold 'n Fleece

—Heidi Finley

The saying goes, “All that is gold does not glitter...,” but that is not the case with Sutter’s Gold ‘n Fleece. The shop, in a quaint and

peaceful country setting, is located on Hwy O in St. Germain, in Wisconsin’s beautiful north woods, roughly a four-hour drive directly north of Madison.

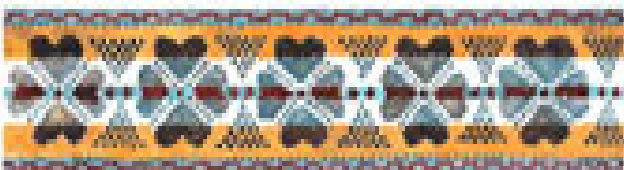
Sutter’s Gold ‘n Fleece is owned by Liz Sutter. Liz and her husband Joe opened the store 10 years ago after moving north from the Chicago area after Joe retired. With Liz, Sutter’s has only three employees, who total 100 years of knit and crochet experience. While Joe does not work in the shop, he does make and sell his own Lazy Susan Swift.

As for instruction, Liz says that help is always available during shop hours and by appointment. She has held knitting retreats in the past and hosts workshops and demo’s on request. If you are in the area, Wednesday is open knitting (bring a lunch) and during the summer Fair Isle Friday’s is from 5—9pm.

You can find Liz on Ravelry as Suttersgold and on the web at <http://www.suttersgoldnfleece.com/>. Liz would like to thank the MKG members for supporting the art of knitting and her store in particular. She encourages everyone to visit her store if in the area and the local guild, The Northwoods Knitters and Purlers.

Sutter’s goal is to “create a shop with beautiful yarns where the focus is on instruction.” They carry a wide range of fibers and will be bringing an assortment of sock yarn, kits from local designer Anne Maillaitte, baby yarn and kits, and Christmas projects featuring luscious, fantastic fibers.

Liz and her husband will have a booth at the Wisconsin Sheep and Wool Festival in September. Liz is teaching a class on how to knit two palm warmer’s using one circular needle and Joe will be selling his swifts.



## Ronda Statz

—Gail Schmitt

The youngest child in a large family, Ronda Statz has always had a creative streak and wanted to knit ever since she was little—but she knew no one who knitted. Eventually, Ronda took matters into her own hands, so to speak. Three years ago, she had some free time and decided to teach herself to knit, but she did not stop there. She began spinning, dyeing and painting her own yarns, and then started her own business selling them. This year she was selected to have her yarn featured at the Sock Summit in Portland, Oregon.

A self-described “multi-media artist/craftster,” Ronda has a bachelor’s degree in art, and her inventiveness extends beyond knitting to felting, crocheting, drawing and painting. She has also done some stamping in the past and even designed a couple of covers for *RubberStampMadness*. Someday she hopes to have her own farm so she can raise sheep and alpacas and have a brick-and-mortar store.



Ronda currently operates her business, htNEVELE Designs (that’s “eleventh” spelled backward, her place in the birth order), over the Internet and sells through her Web site at <http://www.htnevele.etsy.com>. The beautifully colored yarns are available in fingering, sock, worsted and bulky weights. The wool is primarily merino, including a merino/silk blend in sock weight and Peruvian Highland. Ronda also sews and sells bags to tote one’s knitting projects. The bags come in two sizes, large and small, and the small one is perfect for sock projects. She also crochets bowls, which she then felts. You can see photos of them at her Web site. Ronda will be bringing her yarn and totes to the September meeting, and she will accept all forms of payment.

## UFO Retreat

Our retreat weekend will be held on **January 22-24, 2010**, at the Chalet Landhaus in New Glarus. Mark your calendars to attend this fun weekend where projects are shared, finished and a new project started. Various yarns may be purchased, and there’s always lots of food and wonderful sharing of friendships. This year’s event will include a SURPRISE! So please come and share in the fun!



Our thanks to Kay Moffat and Sue Aehl for organizing this event for our guild members.

**From Our President** (continued from page 1...)

our September 14 meeting is Cat Bordhi, knitting designer, teacher, and author of many books, including, *A Treasury of Magical Knitting*, *A Second Treasury of Magical Knitting*, *Socks Soar on Two Circular Needles*, and *New Pathways for Sock Knitters*. Please remember to bring a man's hat for Porchlight to September's meeting. As always, our Community Projects Committee will gladly accept all charity knitting contributions and food, personal hygiene, and baby care items.

On Saturday, September 26, the Guild will once again have a booth at the Farmer's Market in the Food For Thought Festival area. The booth will be located on the section of Martin Luther King Blvd. between the Capitol square and Monona Terrace. There's plenty of room behind the booth to gather and knit. Come down and join us for a fun morning.

We'd like to remind you to check out your Guild's website at <http://madisonknittersguild.org/>. Also, the Guild does have a group on Ravelry – come join your fellow guild friends. For those of you on Ravelry, the link is <http://www.ravelry.com/groups/madison-knitters-guild>. For those of you not on Ravelry, it's free to join and a great way to connect with knitters around the globe.

We look forward to another great year and hope you do, too! See you in September!

**2008-2009 Fiscal Year**

	June	YTD Total
<b>Month Beginning Bank Balance</b>	\$16,794.28	\$10,035.24
<b>INCOME</b>		
Dues - 2008/9		\$9,620.00
- 2009/10	\$595.00	\$2,430.00
Advertisers		\$1,135.00
Library		\$125.80
Tote Bags		\$180.00
Stitches		\$35.00
Knit-In		\$16,106.12
Safari		\$860.00
Donations/Refund		\$1,901.90
<b>Total</b>	\$595.00	\$32,393.82
<b>EXPENSE</b>		
Rent		\$215.00
Facility- West Side Business Club		\$738.24
Newletter-printing & postage		\$2,286.89
Membership - materials & postage		\$841.77
refund		\$160.00
Speakers/Meeting	14.09	\$1,684.09
Library		\$688.54
Insurance		\$255.00
Website		\$380.65
Stitches		\$273.00
Holiday Party		\$702.46
January Retreat		\$258.25
Knit-In		\$12,634.66
Refund		\$385.00
Safari		\$1,213.08
May Pot Luck		\$354.99
Knit Out		\$0.00
Bohus		\$1,750.00
Misc Fees & gifts		\$232.25
<b>Total</b>	\$14.09	\$25,053.87
<b>Month Ending Bank Balance</b>	\$17,375.19	\$17,375.19

**2009-10 MKG Calendar**

- September 12**  
Stitches Bus Trip to Chicago
- September 14**  
MKG Mtg with Cat Bordhi
- September 26**  
Annual Knit Out as part of Food for Thought Festival
- October 12**  
MKG Mtg with Betty Christiansen
- November 9**  
MKG Mtg with Terry Shea
- December 14**  
MKG Mtg with Franklin Habit
- January 11**  
MKG Mtg with Susan Anderson
- January 29-31**  
Annual Knitting Retreat at Chalet Landhaus in New Glarus
- February 8**  
MKG Mtg with Donna Druchunas
- March 8**  
MKG Mtg with Melissa Leapman
- March 13**  
Annual Knit-In with Mason Dixon Knitters Kay Gardiner and Ann Shayne
- April 12**  
MKG Mtg with Gayle Roehm
- April 17**  
Annual Knitting Safari
- May 10**  
MKG Mtg—Brown Bag Exchange, Fashion Show, Yarn Sale



On Chinese food and chopsticks: "You do not sew with a fork, and I see no reason why you should eat with knitting needles."



*la bella vita*  
a fibre gallery

*local & fair trade artisan fibres, accessories, and more*

210 Commerce Street . Mineral Point . Wisconsin 53565  
labellavitamp@yahoo.com 608.987.1123



## Join MKG Knitters and Spinners at the Food for Thought Festival and National Knit Out

On **September 26**, MKG will feature a booth at the Food for Thought Festival. Come join us with your needles or with your spinning wheel. Let's celebrate slow clothes and promote the good work of the Guild!

Of special note is that the featured speaker at this year's festival is Michael Pollan, Knight Professor of Journalism at the University of California. Pollan is known for his engaging books and articles on food and life. He is certain to draw a large audience to the festival. We will publish our booth number on the MKG website when it is available. You can also check in at the information booth, and they will direct you to our booth. The location of the festival is the first full block of Martin Luther King Blvd. just off the capital square. Bring a chair and your needles and Knit On! For more information on this year's festival please visit:

<http://www.reapfoodgroup.org/foodforthought/>

If you need additional information contact Kathy Trudell at [ltrudell@charter.net](mailto:ltrudell@charter.net).



Looms Linen Lessons  
**The Woolgatherers**

Weaving, Spinning, Felting, Knitting  
Yarn, Fiber, Books

Tues. - Sat. 10 to 5  
&  
by Appointment

Stop in and browse!

Hans and Sara von Tresckow  
35 N. Main St.  
Fond du Lac, Wisconsin

[info@woolgatherers.com](mailto:info@woolgatherers.com)  
[www.woolgatherers.com](http://www.woolgatherers.com)  
phone: 920-907-0510

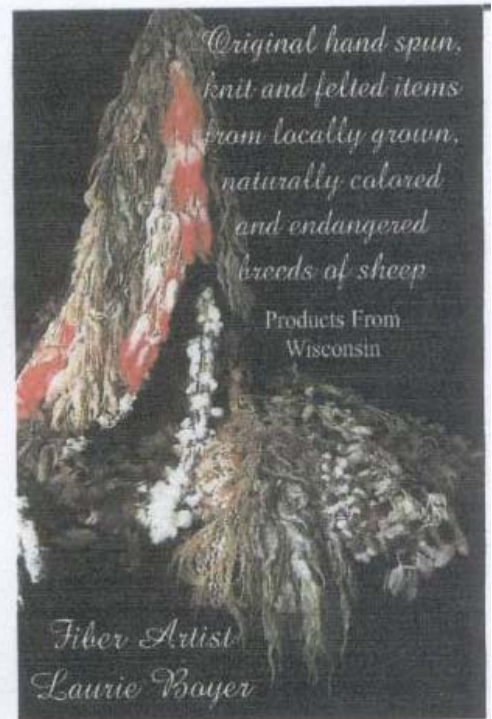


## 9th Annual Brown Bag Exchange

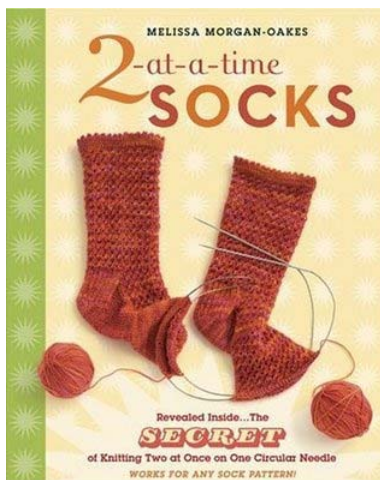
Who wouldn't love to enhance the beauty of his/her home with some appealing colors and inviting stitches? Welcome to this year's Brown Bag Exchange: **Home Sweet Home, Yarn Sweet Yarn**. This year is your chance to have a guild member make something for your home décor. There are lots of choices right now in the world of knitting—pillows, rugs, placemats, tea cozies, coasters,

dishcloths, wineholders and much, much more!

If you would like to participate, pick out some yarn from your stash and bring it along to the October 12 Guild meeting. If the yarn has lost its label, make a note of the weight and fiber content. Put the annotated skein(s) in a paper bag. Do not write your name on the bag. A table will be set up at the meeting where you can turn in your bag which will be assigned a number. That number and your name will be put on a list. During the meeting break, after all the bags have been turned in and marked, come back to the table and pick up a bag, making sure your name and the bag number you take is put down on another list. At the May 2010 meeting, bring back the bag with the completed project to present to the other guild member. Have fun!



[laurie.boyer@att.net](mailto:laurie.boyer@att.net)  
920-406-0768



## Book Review

—Amanda Haynes

This book covers a variation of the Magic Loop technique of knitting socks on one forty-inch circular. “Melissa’s Technique” focuses on addressing the “second sock syndrome” by knitting both socks at the same time. Melissa includes a step-by-step sample sock pattern to help you learn her method.

The sock patterns in this book contain heel flaps and gussets so you might have to do some adjustments if you prefer a different heel construction. It may also

give you a reason to push your personal boundaries and try a new heel style. There are multiple cable patterns, stranded colour work and many textured stitch patterns to choose from. All the patterns are written out and a chart is included for projects with more intricate stitch patterns. Melissa includes extra notes for each design when necessary.

My favorite pattern is Emily’s Socks; they are the socks on the cover of the book. They are created with a straight forward four round stitch pattern and create a lovely texture for variegated or self-striping yarns. The Sailor’s Delight sock also draws me in with its lace and simple lines. This sock has a thoroughly classic feel. The delicate lace stitch is not overwhelmed by a variegated yarn but would look beautiful done in a solid or heathered yarn.

I found Melissa’s book easy to follow with a mix of classic and contemporary sock patterns. The format of the book allows you to see step-by-step how this one needle sock technique can be used to create any sock you could dream up. Her colour photos and relevant tips along the way make learning this technique as visual a process as possible. The book is also hard cover and spiral bound so it lies completely flat to be easier to read while you are first getting your hands to coordinate.

I did find that it was through the combination of photographs and instructions that “Melissa’s Technique” is conveyed. Neither are able to do it on their own but combined create a full picture of this unique sock construction. This book is available in the Guild Library. For more on socks check the library for books by Ann Budd, Cat Bordhi, and Nancy Bush.

**STITCHES  
MIDWEST**  
**Schaumburg, IL**  
**Sept. 10-13, 2009**  
Renaissance Schaumburg Hotel  
& Convention Centre, IL

## Stitches Midwest 2009

### Anyone?

MKG member Jean DeMuzio is driving to Stitches Midwest on Thursday, September 10 and returning on Sunday, September 13. She’d like to know if anyone who might be interested in riding with her. Jean’s contact information is 222-1227 or email [jdemuzio@sbcglobal.net](mailto:jdemuzio@sbcglobal.net).



### IRIS FINE YARNS

132 E. Wisconsin Avenue  
Appleton, Wisc. 54911  
Phone : 920 - 954 - 9001  
info@irisfineyarns.com

[WWW.IRISFINEYARNS.COM](http://WWW.IRISFINEYARNS.COM)

## The Dragonfly Yarn Shop



1327 N. Wright Rd Suite 5A  
Janesville, Wisconsin 53546  
608-757-9228  
[www.dragonflyyarnshop.com](http://www.dragonflyyarnshop.com)

Fine Wool, Luxury Fibers  
Addi Turbo, Crystal Palace  
Classes

Mon, Wed, Thurs, Fri 10 to 5  
Sat 10 to 4  
Sun 12 to 4  
CLOSED TUESDAY  
KERRI A. SHANK - Owner

**FIBERWOOD STUDIO**



YARNS CLASSES SUPPLIES HANDWOVENS

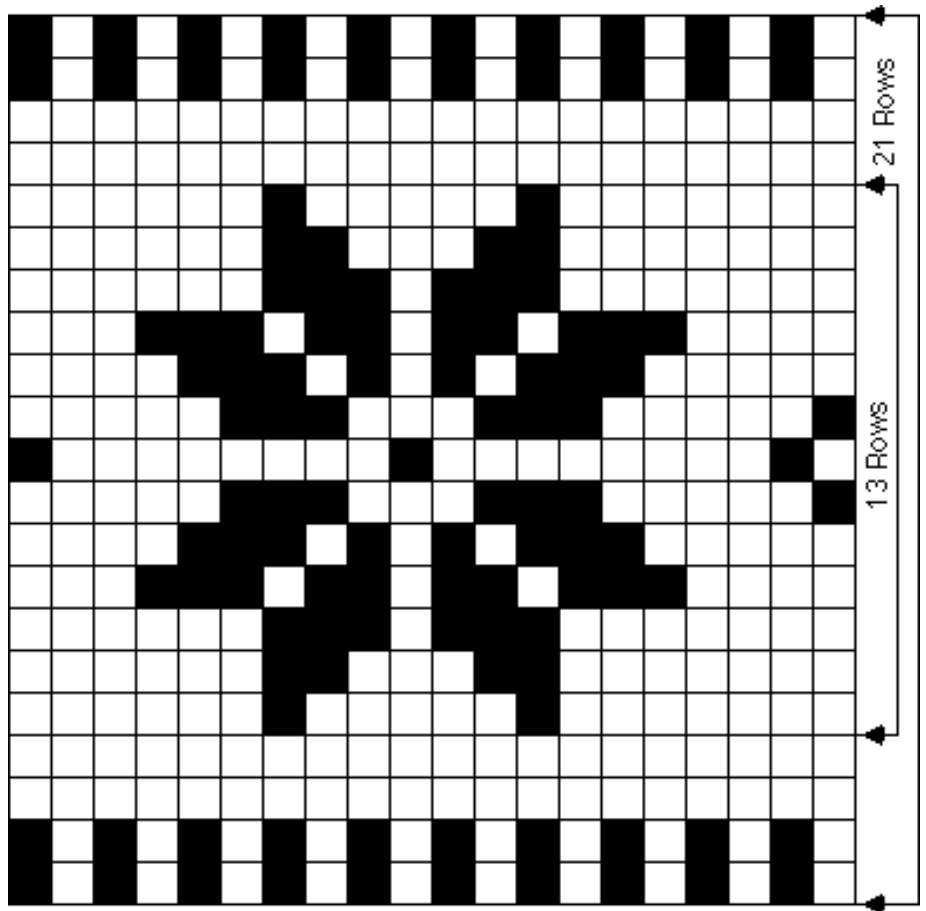
knit • weave • felt • dye • crochet

2709 N. 92nd Street, Milwaukee, WI  
414.302.1849 fiberwoodstudio.com

## Every Snowflake is Different Knitalong

—Molly Tull

Join your fellow Guild members in a unique knitalong. Knit what you want, with the yarn you want. Show your individuality in your knitting. The only requirement is that you somehow incorporate the motif below. Bring your creation to the December meeting to show how your snowflake is different. Please include a tag with your name and yarn information with your entry. Everyone who participates will be entered for a chance at one of three prizes. So get your needles clicking and let's turn that snowflake into a blizzard!



**Argyle FIBER MILL**

We process alpaca, llama and wool yarns, roving, batts and clouds

Proudly featuring 50-Mile Fiber, using local fibers.

Retail store on site.

Open 9-4 pm, T-Sat or by appointment

Argyle, WI 53504  
[www.argylefibermill.com](http://www.argylefibermill.com)  
608.543.3933



**BAHR CREEK LLAMAS & FIBER STUDIO**

**Mark & Brigitte DeMaster**

N1021 Sauk Trail Road  
Cedar Grove, WI 53013  
920-668-6417 • demaster@bahrcreek.com  
www.bahrcreek.com  
www.bahrcreekllamasfiber.blogspot.com



**A yarn shop but SO much more!**  
Hours: Mon – Fri 12:00 – 6:00 & Sat 10:00-4:00  
Other times available by chance or appointment

**Sandy's Palette LLC**

**Sandy Jones**

305 Maiden Street  
Mineral Point, WI 53565  
(608) 987-1346  
sandy@sandyspalette.com  
www.sandyspalette.com



**Hand Dyed Yarns & Roving for Knitters & Spinners**



608 milwaukee st  
delafield, wi 53018

262-646-9392

www.knitch.net

knitch@knitch.net

*school year, open daily*



**Blackberry Ridge  
Woolen Mill, LLC**

*Wonderfully Soft Yarns from our Mill*  
Free catalog listing yarns and products.  
Yarn samples \$7.00

3776 Forshaug Road Mt. Horeb, WI 53572  
(608) 437-3762

We are a working mill and our shop is open by appointment only. Please call ahead.



Visit our web site at: [www.blackberry-ridge.com](http://www.blackberry-ridge.com)




**The Knitting Room**

28 N. Main Street  
Fond du Lac, WI 54935  
920.906.4800

Tues 10-9  
Wed/Thurs 10-5  
Fri 10-3  
Saturday 9-2

Kristin Johnson    theknittingroomwi.com    Beth Mannebach



**Stitcher's Crossing**

Great selection of yarn & needles  
Year 'round classes  
and...  
Quilting & Cross Stitch supplies

M-F 9:30-6:00  
Thu until 8:30  
Sat 9:30-5:00  
Sun 12:00-4:00

608.232.1500  
info@stitcherscrossing.com  
6122 Mineral Point Road  
Madison, WI 53705

**'Tis The Season**

**A Christmas Store with a Yarn Corner**

7507 Hubbard Avenue  
Middleton, WI 53562  
(608) 836-3749

**Store Hours:**  
Monday-Friday 10-5  
Saturday 10-2



'Tis always the season to be knitting!


**Fiddlehead Yarns**

7511-26th Ave Kenosha, WI 53143  
262.925.6487

www.fiddleheadyarns.com  
fiddleheadyarns@wi.rr.com

Tuesday, Wednesday, Friday 10-5  
Thursday 12-6  
Saturday 10-4

Closed Sunday and Monday





## Getting to Know Our Members

Meet one of our out-state members, Judy Koch. She lives in Yorkville, Illinois.

### 1. What role does knitting play in your life?

Knitting is my therapy, my joy and my delightful experience with creativity. It allows me to explore the companionship of people who share the same love

and to also be content to enjoy this wonderful craft on my own.

### 2. Describe your first knitting experience. How did you learn to knit?

My first teacher was a next door neighbor. I was 8-years old and fascinated with her knitting. I asked if she would teach me and she said yes. First, though, I had to unravel and rewind all her "stash." I did, and she did, and I fell in love with knitting then and there.

### 3. What's your favorite pattern?

I really don't have one favorite pattern. My grandchildren all have a Wallaby knit from Carol Anderson's pattern. My favorite sock pattern is the Waterfall Socks by Diane S. Brown and my favorite baby blanket is made from an old out of print pattern (ask Pat Bernhardt, I believe she knows the origin), that I have made for all our babies and many baby gifts. Sweaters I rarely repeat as it's too much fun to find new and interesting patterns and yarn.

### 4. Do you have a yarn stash? If so how big of a container will it take to hold it?

That is like a question from True Confession. Like all long lived Knitters I never have enough wonderful yarn. There is no one container that could hold it all... so I have many in various rooms; have many as to scarves, socks and other yarns for projects to come. I also have a pct with my dear friend Pat Bernhardt that if I die first she will come quickly and magically make it disappear so no one will know how happily obsessive I have been.

### 6. Who do you knit for the most?

I knit mostly for family. I also enjoy making presents for friends and baby presents for their grandchildren. I do not short change myself though as I love making something for me that I know will fit. Then, of course, there are also community service projects.

### 7. Circular or straight? Defend your choice.

I almost exclusively use circular needles. I like the lessening of tension on my arms, only having one needle to keep track of and not bumping people with my arms when I am traveling on a plane.

### 8. What advice do you have for fellow knitters?

Have fun! Start small and be successful, then move on to more complicated projects. Make something you like with yarn that you love so you'll finish, and if it is a garment that has to fit, make a gauge swatch [I know I groan too, but it works]. More than anything, let knitting be your friend and you will have a friend forever.

## Knitter's Treat

Monticello, WI 53570

**Ruth Knight Sybers**  
608-938-4607



Guest Designer Workshops  
Many Complete Pattern Lines  
Vivian Hoxbro Kits


Appointments and Inquiries at [knitterstreat@wekz.net](mailto:knitterstreat@wekz.net)

## BEAD BIN

Beads & Beading Supplies

402 Westgate Mall / Madison, WI 53711  
608-274-0104

10 - 8 Mon. - Fri. 10 - 5 Sat. 12 - 5 Sun.  
[www.beadbinmadison.com](http://www.beadbinmadison.com)



## MAIN ST yarn shop

sit...knit...be happy!

59 N. Main Street  
Hartford, WI  
(262) 673-2203

Closed Sundays and Mondays  
Tues, Thur, Fri 10-5:30 Wed 12-8 Sat 10-3  
[www.mainstyarnshop.com](http://www.mainstyarnshop.com)



## 2009-2010 Madison Knitters' Guild Membership Form

### Wisconsin Residents

### Non-Residents

September-May \$20.00

Anytime \$15.00

February-May \$10.00

New Member     Renewing Member

New Member     Renewing Member

Your membership fee includes a subscription to the *Knitters' News*.

DATE \_\_\_\_\_

NAME \_\_\_\_\_

ADDRESS \_\_\_\_\_

CITY \_\_\_\_\_ STATE \_\_\_\_\_ ZIP \_\_\_\_\_

PHONE \_\_\_\_\_ EMAIL \_\_\_\_\_

WEBSITE OR BLOG \_\_\_\_\_

Please do not include my membership information in the member roster.

Mail this form and your check made payable to the Madison Knitters' Guild to:

Kathy Digman  
5022 Starker Avenue  
Madison, WI 53716

### COMMITTEE PREFERENCES

Want to get more involved in your guild? Please indicate which of the following committee(s) you are interested in serving on during 2009-2010.

Advertising & Publicity

Knit-In Committee

Community Projects

Library

Facilities

Newsletter

Hospitality/Membership

Special Events



## Community Projects

—Jane Newman

Another summer has come and almost gone. Hopefully you were able to get out and do whatever summer activities you enjoy doing even if July was the coolest on record. That weather, however, was good for knitting so maybe you were able to get a head start on knitted items to be donated to community charities.

This year, a community need will be targeted each month and an item or items that can be knitted or purchased to fill that need will be suggested. As always, though, whatever is donated is appreciated and will be delivered to the appropriate organization.

In order to have some preparation time, the item-of-the-month for the year is listed below. A pattern is included for the first month. **September:** Men's watch cap. Not many men's hats were donated last year so I thought we should do something for the homeless men in our community. Toiletries such as toothbrushes, toothpaste, deodorant, chapstick, soap, etc. are also needed. The plan is to package a hat with a few toiletry items; **October:** Baby items-hats, booties, sweaters, blankets. Diapers of all sizes are needed by many organizations; **November:** Mittens-all sizes. School supplies are needed throughout the school year; **December:** Food Drive; **January:** Chemo hats, especially ones for children. Be sure to label chemo hats so they aren't mistaken for regular caps. Many groups need children's games and art supplies.; **February:** Women's Shelters. Knitter's choice-hats, mittens, pretty scarves and toiletries; **March:** Dishcloths and dish soap. Light colors probably would be best as some of the darker colors of cotton yarn tend to "bleed;" **April:** Diapers. As the weather hopefully gets warmer, there is not such a need for hats and mittens but there always is a need for diapers; **May:** Newborn hats and school supplies. The Edgewood College nursing students are planning another trip to Guatemala in August 2010 and will again be needing hats to take with them.

There will be yarn for charity knitting available at the September meeting including some in darker colors suitable for men's watch caps. Directions for the cap are as follows.

### RIBBED WATCH CAP

#### Materials Needed

4 oz. worsted weight yarn  
1 16" circular needle US size 4 or 5, 1 set double point needles US size 4 or 5 (or you can knit the whole hat on the dp needles) or size needles to achieve gauge. [I knit this cap with size 4 needles. Be sure to check your gauge.]

#### Gauge

Approx. 4.5 sts=1" Hat should be knit tight enough to keep the cold out but not so tight that the hat loses flexibility.

#### Instructions

Cast on 100 stitches (either cast on all sts on the 16" circular needle, or cast on to dp needle and divide stitches evenly). Work entire hat in rounds in knit 1, purl 1 ribbing until hat measures 10" from cast on row. Work top shaping:

Round 1: \*work 8 sts in ribbing, k2 tog; repeat from \*.  
(You'll need to switch to the dp needles eventually, if you are using a circular needle).

Round 2: \*work 7 sts in ribbing, k2 tog; repeat from \*.

Round 3: \*work 6 sts in ribbing, k2 tog; repeat from \*.

Round 4: \*work 5 sts in ribbing, k2 tog; repeat from \*.

Round 5: \*work 4 sts in ribbing, k2 tog; repeat from \*.

Round 6: \*work 3 sts in ribbing, k2 tog; repeat from \*.

Round 7: \*work 2 sts in ribbing, k2 tog; repeat from \*.

Round 8: \*k1, k2 tog; repeat from \*.



Round 9: \*k2 tog; repeat from \*.

Cut yarn, thread through blunt needle and run through remaining stitches, draw them up tightly and secure on the wrong side. Weave in any ends (you will be turning up the brim of the hat, so take this into account when you weave in the ends! You'll want to weave them in on the "right side" of the work, then turn the brim up).

Pattern taken from "Ribbed Watch Cap" pattern c.2001 By Laurie Kynaston; <http://www.vintageknits.com>. You may share this pattern on your on-line knitting pattern collections or in newsletters, providing this notice remains attached. (I would appreciate notification if you use this pattern!) This pattern is intended for personal use, or for charitable donations/sale. Please contact me at [lavs@vintageknits.com](mailto:lavs@vintageknits.com) for permission to include this pattern in any written collection or to use it for commercial purposes.

### Needles 'n Pins Yarn Shoppe

Doreen L. Marquart, Owner

W9034 County A (Richmond) Delavan, WI 53115

\*\*\*\*\*

Hours: Mon, Wed, Fri & Sat 9:00 a.m.—5:00 p.m.

Sun 1:00—5:00 p.m. (closed on Tues & Thurs)

Over 40,000 skeins of yarn in stock!

Phone: 608/883-9922

[www.needlesnpinsyarnshoppe.com](http://www.needlesnpinsyarnshoppe.com)



## 2009-2010 Board of Directors & Committee Chairs

### Board of Directors

President	Kate Findley (11)
Vice President	Connie Burmeister (10)
Secretary/Retreat Chair	Kay Moffat (10)
Co-Treasurer	Kathy Digman(11)
Co-Treasurer	Kathy Trudell (10)
Advertising	Peg Corp (12)
Publicity	Joan Deneen (12)
Historian	Elizabeth Wellenstein (12)
Webmaster	Delaine Zulke (12)

### Committee Chairs

Community Projects	Jane Newman
Hospitality	Susan Aehl
Knit-Aid Station	Robbie Preston
Library	Karen Scammell
Membership	Mary Jo Harris
Newsletter	Jayne Coster

## Knit Aid Station



Just can't figure out what the pattern is trying to tell you to do? Can't remember how to make that certain stitch? Can't figure out what you did, but it sure doesn't look right? **NEED HELP?**

The **Knit Aid Station** will be open beginning at 6:00 pm prior to our monthly meetings at the West Side Club. Each month, two members of our guild will be available as "Knitting Doctors" to staff the table for those of you who need help with a project. If you are interested in staffing the help desk, please contact Robbie Preston.

## Newsletter Submissions

Do you have an idea for an article in our monthly newsletter? Submissions are always welcome. The deadline for submitting articles is the 20<sup>th</sup> of each month. Articles may be sent to Jayne Coster at [jaynecoster@ameritech.net](mailto:jaynecoster@ameritech.net).

## DISCOUNTS FOR GUILD MEMBERS 2009-10

Continue to check back at this list for updates. Be prepared to show your membership card and ask about a discount for guild members as you shop at stores not listed here.

- ARGYLE FIBER MILL** 10 % off regular priced items
- BEAD BIN** 10% off beads and findings
- LA BELLA VITA FIBRE GALLERY** 15% off storewide with card
- KNITTER'S TREAT** 10% off Vivian Hoxbro kits, 25% off most books
- THE KNITTING ROOM** 10% off yarn purchases with card
- PRAIRIE JUNCTION** 10% off regular priced items with card (must mention at time of purchase)
- SOW'S EAR** Loyalty card reward system available to all + 10% off yarn on the Sunday before a guild meeting
- STITCHER'S CROSSING** Store point reward system and buyers' club available to all
- SUTTER'S GOLD 'N FLEECE** 10% off
- 'TIS THE SEASON** 10% off regular priced yarn with card
- WOODLAND STUDIOS** 10% discount



## Visit Us on the Web!

You are encouraged to visit us on the worldwide web at: <http://www.madisonknittersguild.org/>



## Consider A Carpool

Are you interested in starting a carpool to meetings? Or perhaps you'd like to be a rider to our monthly guild meetings. If you are interested in being a driver or need a ride to our meetings, please contact Jayne Coster or send an email to [carpool@madisonknittersguild.org](mailto:carpool@madisonknittersguild.org).



## MKG Membership

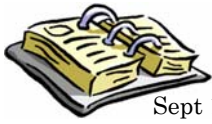
Annual membership dues for Wisconsin residents is \$20.00 and \$15.00 for non-Wisconsin residents. These fees include a subscription to the *Knitters' News*. According to our guild's bylaws, dues shall be made payable in advance of the

first day of October in each fiscal year. Dues of any new Wisconsin resident paid after February of each fiscal year shall be \$10.00, which is half of the annual dues. Dues for any new non-Wisconsin resident shall remain as set by the board of directors throughout the current fiscal year. We welcome guests to our meetings. After you have been a guest at one of our meetings, we ask that you join the Guild at the next meeting you attend.



"Knit on, with confidence and hope, through all crises."

—Elizabeth Zimmermann, 1910-1999



## MKG Calendar

Sept 14	MKG Mtg	7:00 pm	West Side Club with Guest Speaker Cat Bordhi <b>(MEMBERS ONLY MEETING)</b>
Sept 17	MKG Bd Mtg	6:00 pm	Sequoia Branch of Madison Public Library
Sept 26	Annual Knit-Out Day		Included with Food for Thought Festival
Oct 12	MKG Mtg	7:00 pm	West Side Club with Guest Speaker Betty Christiansen
Oct 19	MKG Bd Mtg	6:00 pm	Sequoia Branch of Madison Public Library
Nov 9	MKG Mtg	7:00 pm	West Side Club with Guest Speaker Terri Shea
Nov 16	MKG Bd Mtg	6:00 pm	Sequoia Branch of Madison Public Library
Dec 14	MKG Mtg	7:00 pm	West Side Club with Guest Speaker Franklin Habit
Dec 21	MKG Bd Mtg	6:00 pm	Sequoia Branch of Madison Public Library
Jan 11	MKG Mtg	7:00 pm	West Side Club with Guest Speaker Susan Anderson
Jan 18	MKG Bd Mtg	6:00 pm	Sequoia Branch of Madison Public Library
Jan 29-31	UFO Retreat Weekend		Chalet Landhaus in New Glarus

## Other Fiber Events

**Knitting Along the Viking Trail** in Decorah, IA, at the Vesterheim Norwegian-American Museum, July 12-October 11. Visit <http://vesterheim.org/exhibitions/Knitting.php> for more information.

**Stitches Midwest** on September 10-13, 2009, will be held in Schaumburg, IL. For more details please visit: <http://www.knittinguniverse.com/flash/events.php>

**Wisconsin Sheep and Wool Festival** in Jefferson, WI, September 11-13, 2009. For more information, visit: <http://www.wisconsinssheepandwoolfestival.com/>

**Fiber in the Park** in Earlville, IL, at Shabbona Park, September 19, 2009. Visit <http://www.fiberinthepark.com/> for more details.

**Susanna Hansson** presents Bohus Knitting at UW Foundation at Friends of the Helen Louise Allen Textile Collection Event on September 20, 2009. For more information, email [susan.owen@uwfoundation.wisc.edu](mailto:susan.owen@uwfoundation.wisc.edu) or call 262-1472.

**Susanna Hansson** workshops in Monticello, WI, September 21-23, 2009. Email [knitterstreat@wekz](mailto:knitterstreat@wekz) or phone 608-235-2835.

**Lucy Neatby** workshops in Monticello, WI, November 17-19, 2009. Contact Ruth Sybers at 608-235-2935 for details.

**Sheep in the City**, Oak Creek, WI, February 26-28, 2010. Visit [http://web.mac.com/jmassie1/Sheep\\_in\\_the\\_City/Welcome.html](http://web.mac.com/jmassie1/Sheep_in_the_City/Welcome.html)



Madison Knitters' Guild  
397 Starling Lane  
Madison WI 53704